

CALIFORNIA ASSOCIATION
CAIR
for INSTITUTIONAL RESEARCH

USING DATA FOR ADVOCACY

46TH ANNUAL CONFERENCE

OCTOBER 27-29, 2021

RESORT AT SQUAW CREEK - LAKE TAHOE, CA

Welcome

Hello CAIR Community:

The last two years have been quite the experience as we make our way through a health pandemic, racial epidemic, and raging California wildfires - just to name a few challenges. Our 46th Annual Conference has happened against all odds, but in these times it is important to continue the critical discussions and work that establish our paths forward.

Our conference theme for 2021 is Using Data for Advocacy, which covers the following topics:

- Providing data-supported recommendations and engaging in critical data-supported discussions.
- Working on committees or groups to advocate for data findings, policies, and initiatives.
- Supporting and completing work that closes equity gaps.
- Including students as joint advocates in decision making.
- Contextualizing findings within the context of institutional mission and values.
- Using qualitative research methods to understand smaller populations.

The theme comes from reflection on the last year of engaging with our community, our important work in Equity, Diversity, and Inclusion (EDI), and the need to move from data stewards and collectors to advocates.

As professionals within Institutional Research (IR) we have the opportunity to advocate with our data, by telling its story, and by standing up for initiatives, policies, and programs that are proven to work.

We are the data's voice, we make recommendations, we serve on committees, and in some cases advocate for change to state and federal legislatures.

The theme was finalized after a discussion with a volunteer of CAIR's Equity, Diversity, and Inclusion Taskforce, Dr. Eric Felix from San Diego State University. He shared research from an in-progress paper that he and colleagues, Diego Ceballos and Rogelio Salazar, created to examine IRs role in equity at California Community Colleges.

The findings were that although equity is generally prioritized within California's Community Colleges, the pattern was not true for IR offices. This came from a study of mission statements of over a hundred California Community College IR offices, where nearly 90% of mission statements failed to define ways in which IR can improve equitable outcomes. Their work serves as a call to action to the field of IR to "...be more race-conscious and equity-minded in the ways [IR] articulate their role and function in higher education."

We took the call and, as you will see throughout this program, we have curated programming around important topics of EDI, COVID-19 response, and the overall advocacy we have initiated on behalf of our institutions, students, and communities.

Thank you to all of those who have made this conference possible. We could not have done it without our Board of Directors, our volunteers, attendees, and sponsors. We hope you will enjoy the conference!

Never stop your advocacy!



Rosa Belerique
Rosa Belerique
2021 CAIR President

CAIR BOARD OF DIRECTORS



BOARD OFFICERS



PRESIDENT

Rosa Belerique
New York Film
Academy



VICE PRESIDENT

Andrew Cress
California Baptist
University



PAST PRESIDENT

Cinnamon Danube
University of California,
Merced



SECRETARY

Roop Prabhu
Golden Gate
University

BOARD DIRECTORS



Juan Carlos Apitz
California State University,
Long Beach



Donald Everhart
AMD College of
the Performing Arts



Cheryl Harris
MiraCosta
College



Jeremy Ashton Houska
University of
La Verne



Vikash Lakhani
Palomar
College



Susana Santos
Whittier
College



Meiling Tang
Touro University
California



Ryan Hoadwonic
University of California,
Irvine

GENERAL INFORMATION



CONFERENCE APP

The conference mobile app brings all the details of the conference to your fingertips. Browse the complete conference program and save your favorite sessions to your personal schedule, access session evaluations, learn more about our sponsors and their services, connect with fellow attendees, and much more!

CAIR 2021 will use the award-winning [Whova](#) platform to deliver conference updates as well as opportunities to network with other attendees and sponsors. The full conference program of events is now available for registered attendees via the Whova mobile app and web portal. Click the icon below to download the app or visit [whova.com](#).



EXHIBIT HALL

Take a break and visit our sponsors under Exhibitors. Meet our sponsors and learn about the latest software, products, and services available to IR. You can access the Exhibitors at any time. Take part in their promotional offers and access their brochures. You can also participate in the Exhibitor Challenge by inquiring at each booth. To participate, visit each onsite sponsor and let them scan the QR code found on your conference badge. Participants must inquire at all booths to be eligible for the Amazon Gift Card.

SESSION AND CONFERENCE EVALUATIONS

Session evaluations are integral to the selection of the annual Best Presentation Award. Links to the online session are accessible on the mobile app and web portal. To access the session evaluation, click on **Feedback**, then select the session you want to evaluate.

COMMUNITY

Chat with other CAIR 2021 attendees and earn points! Under Community, ask organizers a question, create a topic, and network with other conference attendees. To respond to a specific individual, don't forget to @ them. For more information on joining the discussion board, click [here](#).

EDIT YOUR PROFILE ON WHOVA

Don't forget to add some flair to your Whova profile. Add a headshot and any other important information you want others to know. This helps build connections! You can even sync information from your social media profiles such as LinkedIn and Facebook.

Click here for *Whova* user guide.

2021 CONFERENCE SPONSORS



SILVER SPONSORS - EXHIBIT HALL



BRONZE SPONSORS



POST-CONFERENCE SESSIONS



Ready. Set. Go Stata.
November 10, 2021
12:00 PM PT



**Writing Great Business
Glossary Definitions**
January 11, 2022
11:00 AM PT



To Be Announced
Check out our social
media page for future
details



CAIR 2021 Conference: Using Data for Advocacy

Extended Workshop | IR101 Series | Invited Sessions

Meeting Rooms	Emigrant Peak 32 Classroom Seating	Monument Peak 32 Classroom Seating	Pyramid Peak 21 Classroom Seating	Castle Peak 21 Classroom Seating
Tuesday, October 26th				
6:00pm - 8:00pm	Early Bird Reception (Montagna)			
Wednesday, October 27th				
8:00am - 5:00pm	Registration (Grand Sierra Prefunction)			
9:00am - 11:45am	CSU Informal Networking	UC Segment Meeting (Alexander)	Independent Segment Meeting (Everhart)	CCC Segment Meeting (Cooper)
Noon - 1:30pm	Welcome Luncheon & Presentation (Grand Sierra Ballroom A&B)			
1:30pm - 2:00pm	Sponsor Exhibit / Networking (Grand Sierra Prefunction)			
2:00pm - 2:45pm	IR101: How IR Analysts Can Support Equity, Diversity, and Inclusion (Eppig & Alexander)	What's it worth? Illuminating the value of a degree (Moore-Trieu, Kongsamut, & Prayag)	Metrics that Matter: Moving the Needle on Student Success and Equity (McVeary & Ansell)	The Court is now in session: How is our enrollment? (Abdou, Swarat, & Murarka)
3:00pm - 3:30pm	Coffee Break (Castle Cascades)			



3:30pm - 4:15pm	IR101: What is IR, Anyway? (Martinez & Lee)	Invited Session: WSCUC's KID: Advancing Data in Accreditation (Huie & Chase)	Brief surveys for understanding COVID-19 student learning experiences (Sher & Uang)	Federal Loans, equity, and long-term outcomes (Malinowska)
4:30pm - 5:15pm		Exploring Overlooked Equity Gaps in Persistence and Graduation Rates (Lacno-Musngi)	Hypogeal Achievement Dynamics: Exploring High School and College Grading Variability (Willett)	Reviving the Program Review Process (Narvaez, Ywan, & Starkey)
5:15pm - 7:45pm	President's Reception: Movie Screening of "This Changes Everything" & Virtual Q&A with Executive Producer Madeline Di Nonno (Grand Sierra Ballroom A&B)			
Thursday, October 28th				
7:30am - 5:00pm	Registration (Grand Sierra Prefunction)			
8:00am - 9:30am	Breakfast Buffet			
9:30am - 10:00am	Sponsor Exhibit / Networking			Workshop: Building a Reproducible Equity Report in R (Gonzalez & Madsen)
10:00am -10:45am	IR101: Show Me the Numbers: Basic Principles of Data Visualization (Trescott)	Predictive modeling project success through conversation, process, and transparency (Ruiz)	Making Assessment "Personal": Unpacking Student Learning and Engagement (Murarka, Dawson, & Swarat)	

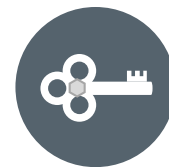


11:00am -11:45am	Informational on a Future CAIR Book/Article/Chapter Club (Santos)	Diversity, Campus Climate, and Student Success at University of California (Chang, Popoola, Yang, & Sanders)	Graduation predictive model to support student success and GI2025 (Karimi & Swarat)	Needs Assessment at a Rural College Center Amidst COVID-19 (Cooper, Bateman & Kelly)
Noon - 1:45pm	Keynote Luncheon (Grand Sierra Ballroom A&B): Equity for What? The Promise and Possibilities of Repurposing Research Discussion with Dr. Jeff Duncan-Andrade			
1:45pm - 2:15pm	Sponsor Exhibit / Networking			
2:15pm - 3:00pm	IR101: SQL for IR Beginners (Prabhu)	Invited Session: The RP Group's Equity Journey (Cooper)	Virtual Learning: Student and Faculty Perceptions of Synchronous Courses (Bowen & Cummings)	A New System for Student Surveys at UC Davis (Motika & Jackson)
3:00pm - 3:45pm	Coffee Break (Castle Cascades)			
3:45pm - 4:30pm	Conducting Focus Groups in Times of Social Distancing (Nottbohm, Cowan, & Huynh)	Stopout Student Advocacy and Support (Townsend & Danube)	Classroom Diversity and Student Dropout: New Evidence from Panel Data (Herzog)	Invited Session: WSCUC AMA at CAIR 2021 (Chase & Huie)
4:45pm - 5:30pm	IR101: Survey Research (Danube)	Maps for Data Advocacy: Informing Institutional Diversity, Equity and Inclusion (Murarka, Dawson, Biesiada, & Swarat)	Are We Burdening Low Income Students? Work and Loan Expectations (Clever)	Making the most of data infrastructure in the pandemic (Motika, Molinaro, & Steinwachs)



6:00pm - 8:00pm	Dinner on your own			
8:00pm - 10:00pm	CAIR Game Night (Montagna)			
Friday, October 29th				
7:30am-1:30pm	Registration (Grand Sierra Prefunction)			
8:30am - 10:00am	Breakfast & Networking			
10:00am -10:45am	From WU to Departure: Academic Disengagement and Student Attrition (Yeung & Furuichi)	Deepening collaborations between institutional research and faculty: making equity visible (Jaafar & Cuellar)	A finger on the pulse: Responding to students during crises (Thomas)	Amplifying Student Voices: LGBTQ+ Focus Groups with the SDCCD (Seiverd)
11:00am - 11:45am	IR101: Stages of An IR Professional (Lakhani)	Assessing a First-Year Experience Course Using Propensity Score Matching (Biesiada, Abdou, Yang, & Swarat)	Course Analytics Engaging Faculty in the Advancement of Equity (Lacno-Musngi)	Utilizing Institutional Data, Collaboration and Interactive Dashboards in Bridging Gaps (Carty)
Noon - 1:30pm	Closing panel (Grand Sierra Ballroom A&B): Using Data for Advocacy: A Conversation with Advocates Light Lunch			
1:30pm - 2:30pm	Tournaments / Lawn Games			

KEYNOTE SPEAKERS



WEDNESDAY



**MADELINE DI
NONNO
GEENA DAVIS
INSTITUTE ON
GENDER IN MEDIA**

Movie Screening This Changes Everything (2018)

Madeline Di Nonno is the President and CEO of the Geena Davis Institute on Gender in Media, the leading research-driven advocacy organization working within the entertainment and media industry to create gender balance, foster inclusion and reduce negative stereotyping in family entertainment media.

**SCREENING FOLLOWED BY
A VIRTUAL Q+A WITH
MADELINE DI NONNO**



THURSDAY



**JEFF DUNCAN-
ANDRADE
SAN FRANCISCO
STATE UNIVERSITY**

Equity for What? The Promise and Possibilities of Repurposing Research

Dr. Jeff Duncan-Andrade is Professor of Latina/o Studies and Race and Resistance Studies at San Francisco State University. He is also a founder of the Roses in Concrete Community School, a community responsive lab school in East Oakland and the Community Responsive Education Group. As a classroom teacher and school leader in East Oakland (CA) for the past 29 years, his pedagogy has been widely studied and acclaimed for producing uncommon levels of social and academic success for students. Duncan-Andrade lectures around the world and has authored numerous journal articles and book chapters on effective practices in schools. He has written two books and his third book with Harvard Press is due out Spring 2021. In 2015, Duncan-Andrade was tapped to be a Commissioner on the National Commission on Teaching & America's Future (NCTAF) and in 2016 was part of the great educators invited to the White House on National Teacher Appreciation Day by President Obama. He is also the 2019 Laureate for the prestigious Brock International Prize in Education. Duncan-Andrade is also consistently ranked as one of the nation's most influential scholars by EdWeek's Public Influence Rankings.

Duncan-Andrade's transformational work on the elements of effective teaching in schools is recognized throughout the U.S. and as far abroad as New Zealand. His research interests and publications span the areas of youth wellness, trauma responsiveness, curriculum change, teacher development and retention, critical pedagogy, and cultural and Ethnic Studies. He works closely with teachers, school site leaders, union leaders and school district officials to help them develop classroom practices and school cultures that foster self-confidence, esteem, and academic success among all students. Duncan-Andrade holds a Ph.D. in Social and Cultural Studies in Education and a Bachelor of Arts degree in Literature, both from the University of California – Berkeley.

KEYNOTE SPEAKERS



FRIDAY

Using Data for Advocacy: A conversation with advocates

Using data for advocacy takes many forms on many campuses. Join our panelists representing the California Community Colleges, University of California, and private not-for-profit institutions in a community-wide discussion surrounding the use of data to advocate on behalf of students, their success, and effective accomplishment of our role as institutional research professionals.



MODERATOR: ANDREW CRESS
Director of Special Projects,
Educational Effectiveness
California Baptist University



DR. BRIANNA MOORE-TRIEU
Program Lead
University of California System
Administration Central Office



DR. ERIK COOPER
Dean of Planning, Research,
and Resource Development
Sierra College



DR. SUSANA SANTOS
Director of Institutional
Research and
Assessment
Whittier College



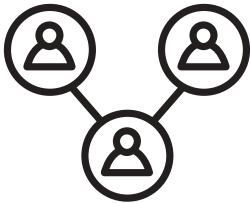
DR. STEPHANIE HUIE
Vice President
WASC Senior College
and University
Commission



**HAVE A QUESTION? USE THE APP TO
SEND QUESTIONS TO THE PANEL.
DON'T FORGET TO COMPLETE YOUR
SESSION EVALUATION.**



LEADERBOARD GAME



Prize: \$100 Amazon Gift Card

- Earn points based on your participation in the community board.
- The more you post, the more points you earn.
- Share photos, give a session feedback, post a question, answer a survey, etc.
- Check your current ranking under Leaderboard.
- The attendee with the most points wins!

EXHIBITOR CHALLENGE

Prize: \$10 Amazon Gift Card

- Visit our sponsors in the Exhibit Hall.
- Sponsors will scan your badge.
- Ten winners will be selected at random.
- First six attendees that complete the challenge will receive a mask holder.

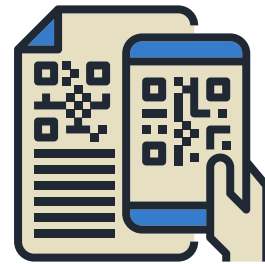
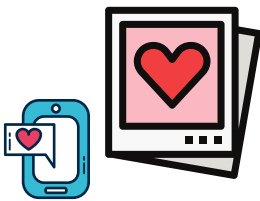


PHOTO CONTEST



Prize: \$10 Amazon Gift Card

- Upload your photos through Whova.
- The photo with the most likes wins.

QUESTIONS?

Under the Community tab, leave a question under Ask Organizers Anything. CAIR Directors will be notified of your post and will respond shortly.



CAIR Board Members are not eligible to participate in the CAIR Games.

EVENT SCHEDULE



WEDNESDAY, OCTOBER 27

All events in Pacific Time

9:00 AM-11:45 AM

CCC Segment Meeting

Castle Peak

Speaker: Erik Cooper

Join other California Community College institutional research, planning, and effectiveness professionals for an interactive session including updates on RP Group projects, professional development for the field, statewide updates, and breakout discussions with colleagues on issues of critical interest to the field.

9:00 AM-11:45 AM

CSU Informal Networking

Emigrant Peak

The CSU segment meeting will be utilizing small group discussions as a way for folks to discuss pressing campus IR issues and logical hanging threads around which clarity/brainstorming is needed. Topics may help IR offices think through challenges to reporting and analytic goals.

12:00 PM-1:30 PM

Welcome Luncheon & Presentation

Grand Sierra Ballroom

Speaker: CAIR Board

Hear from 2021 CAIR President Rosa Belerique and the 2021 CAIR Board of Directors.

9:00 AM-11:45 AM

UC Segment Meeting

Monument Peak

Speaker: Sereeta Alexander

UC campuses will meet to provide campus and systemwide updates, discuss challenges and successes, and learn from each other. Topics of discussion may include: analyses on remote learning and other pandemic issues, near term enrollment planning, surveys, assessment, and accreditation.

9:00 AM-11:45 AM

Independent Segment Meeting

Pyramid Peak

Speaker: Donald Everhart

This session will provide a forum for discussions relevant to the independent segment institutions. Special attention will be given to issues impacting both profit and non-profit institutions along with special interest groups present in the independent segment.

1:30 PM-2:00 PM

Sponsor Exhibit/Networking

Check out the Exhibitors

Take a break, network, and visit one of our sponsor booths in the exhibit hall for the chance to win a prize! Submit an inquiry at each booth and be entered to win a \$10 Amazon gift card.



Entrees

- Baja Caesar Salad, Romaine, Pepitas, Garlic Croutons, Parmesan, Chipotle Dressing
- Chipotle Chicken Fajitas, Grilled Peppers, Onions
- Charro Beans, Onions, Garlic, Oregano
- Arroz Roja, Green Chilies, Tomato, Smoked Paprika
- Shredded Cabbage, Sharp Cheddar Cheese, Jalapenos, Mini Flour Tortillas

Desserts

- Ancho Chile Cinnamon Chocolate Cake with Iboarra Chocolate Ganache
- Tequila and Pineapple Margarita Mousse

EVENT SCHEDULE



WEDNESDAY, OCTOBER 27

All events in Pacific Time

2:00 PM-2:45 PM

What's it worth? Illuminating the value of a degree

Monument Peak

Speakers: Brianna Moore-Trieu, Woody Kongsamut, Amit Prayag

Higher education institutions are often asked to demonstrate the value of a college degree to the public and to the individual consumer. In this session, institutional researchers at the University of California Office of the President leverage an assortment of data to demonstrate the value of a UC degree by exploring value of alumni outcomes in four areas: public economic, personal economic, public well-being, and personal well-being. We provide examples of alumni outcomes using data from state wage systems, taxes, voter registrations, alumni and student surveys, licensure databases, and other private-industry data to demonstrate the value of a UC college degree. Attendees will learn about the framework and are invited to consider these data sources when highlighting the value of a college degree for their own institutions. Attendees working in admissions, advancement, government relations may also find this approach helpful for advocacy in their work.



2:00 PM-2:45 PM

The Court is now in session: How is our enrollment?

Castle Peak

Speakers: Noha Abdou, Rohit Murarka

Like other institutions, a healthy enrollment is the foundation for CSUF's institutional effectiveness. The size of our student enrollment should be within a range where we are neither taxed beyond our capacity to deliver quality education, nor under-enrolled to impede operation. Hence, the ability to monitor enrollment in real time is crucial. In partnership with IT, CSUF Office of Assessment and Institutional Effectiveness developed the Registration Snapshot Dashboards as an operational analysis tool that provides the campus with an easy way to understand enrollment data. The dashboards provide real time answers to questions like 'how does our current term enrollment compare to prior terms?', 'are we meeting our enrollment targets?', 'how is our enrollment by residency, college, department, course, and class section?', 'how many students enrolled in 15+ units?' to name a few. The audience will learn how to build similar tools for their own campus.

EVENT SCHEDULE



WEDNESDAY, OCTOBER 27

All events in Pacific Time

2:00 PM-2:45 PM

IR101: How IR Analysts Can Support Equity, Diversity, and Inclusion

Emigrant Peak

Speakers: Andrew Eppig, Sereeta Alexander

Data advocacy for equity, diversity, and inclusion at institutions of higher education has never been more timely. This IR101 session will provide an introduction to how IR analysts can support the work of equity, diversity, and inclusion at their home institutions. This session will discuss practical approaches that can be used at any type of institution, and attendees will learn basic techniques for analysis, reporting, interpretation to better promote equity, diversity, and inclusion in their work. While aimed primarily at new analysts, analysts at every level are welcome and encouraged to attend.

3:00 PM-3:30PM

Coffee Break

Castle Cascades

BEVERAGES

Starbucks Regular Coffee

Starbucks Decaffeinated Coffee

Assorted Specialty Teas

Assorted Bottled Smoothies



BUILD YOUR OWN SNACK MIX

Peanuts, Cinnamon Almonds, Walnuts, Pistachios, Soy Nuts, Sunflower Seeds, Pepitas, Dried Cranberries, Yogurt-Covered Raisins, Dark Chocolate Chips

3:30 PM-4:15 PM

WSCUC's KID: Advancing Data in Accreditation

Monument Peak

Speakers: Stephanie Huie, David Chase

WSCUC's KID, the Key Indicators Dashboard, presents detailed trend and comparative information on its accredited undergraduate institutions in a clear, easy to use format. Join WSCUC staff for a presentation and discussion of the KID - it's origin, contents, use, and future.

2:00 PM-2:45 PM

Metrics that Matter: Moving the Needle on Student Success and Equity

Pyramid Peak

Speaker: Ken McVeary, Charles Ansell

Today's higher education institutions are looking to make data-informed decisions and to build data literacy with more emphasis than ever before. Faced with budget constraints, declining enrollment, and calls for accountability and equity, institutions are looking for strategies to meet these demands. The Postsecondary Data Partnership (PDP) is one such tool, and will be introduced in this session with a brief overview and demonstration of the dashboards. The remainder of the session will focus on a discussion of the use case from two California Community Colleges who are using the PDP. They will discuss how they are using the PDP, how it is making a difference, and how they are building data literacy. Lessons learned from these colleges can be applied to any institution using data tools to advance equity and data-driven decision making.

3:30 PM-4:15 PM

IR101: What is IR, Anyway?

Emigrant Peak

Speakers: Daniel Martinez, Deborah Lee

Are you new to Institutional Research? Do you want to know more about some of the things you are expected to do as an institutional researcher? This panel discussion will discuss the primary functions of IR, such as data collection and management, data mining, and reporting, along with some "big picture" considerations of IR in higher education. Participants will better understand the scope of an institutional research office and their role within it.



EVENT SCHEDULE



WEDNESDAY, OCTOBER 27

All events in Pacific Time

3:30 PM-4:15 PM

Federal Loans, equity, and long-term outcomes

Castle Peak

Speaker: Aleksandra Malinowski

Graduate students in the U.S. account for 15% of the student population but hold over 40% of student loans, estimated at \$37 billion. Graduate students at the University of California, Santa Barbara borrowed over \$5.5 million in federal loans in 2019/20. While total federal loan amounts dropped each year since 2017, almost 60% of loans were acquired by students pursuing a degree in education, social sciences, or humanities and fine arts. Due to the long-term consequences of student loans on variables ranging from economic to mental health, we seek to understand loan breakdowns by gender, ethnicity, program, and degree objective and outcome. Using federal loan data and student academic data at UCSB between 1980 and 2021, we find significant differences between degree divisions, unknown and Native American students as compared to White students, and females versus males. These outcomes help determine where non-loan financial aid assistance may be most useful.

4:30 PM-5:15 PM

Hypogeal Achievement Dynamics: Exploring High School and College Grading Variability

Pyramid Peak

Speaker: Terrence Willett

Much of our research focuses on factors that relate to student achievement such as support interventions, redesigned curricula, and policy changes. Underneath student achievement metrics are course grades, which can vary substantially among institutions, disciplines, and faculty regardless of student background. Moreover, grades may vary nonrandomly over time due to improved performance, changes in grading practices, or other factors. This session will explore the variability of English and math course grades and GPA's at California high schools and community colleges with implications for policy and practice.

3:30 PM-4:15 PM

Brief surveys for understanding COVID-19 student learning experiences

Pyramid Peak

Speaker: Anna Sher, Randy Uang

Timely, short, frequent surveys help universities adjust to crisis situations such as the COVID-19 pandemic. The "StayConnected2UCSC" series of four surveys, conducted between October 2020 and March 2021 by UC Santa Cruz, illustrates how a series of short "pulse" surveys can be used to help understand student experiences on remote learning, student life, and basic needs over a quick period of time. Our survey design and analysis aimed to help various student support services to be responsive to undergraduate and graduate student needs during the pandemic, with a special focus on first-generation student experiences. Session objectives include sharing how these surveys were developed, how portions of these surveys built on each other, and how analysis of results can be used to suggest changes intended to help campuses adjust during crisis situations.



EVENT SCHEDULE



WEDNESDAY, OCTOBER 27

All events in Pacific Time

4:30 PM-5:15 PM

Reviving the Program Review Process

Castle Peak

Speaker: Maria Narvaez, Kristina Yawn, Michele Starkey

The Program Review process is an integral part of institutional effectiveness, and at Mount Saint Mary's University in Los Angeles, program review had become ineffective. Many programs had fallen off the cycle, and for some, it had been ten years since they had last conducted a program review. In 2019, the Curriculum Committee developed a charge for a separate Program Review Committee. The new Chair and the Associate Provost worked closely with Institutional Planning and Research on the process, including building the timeline, defining data needs, creating templates, etc.

The new process was received with hesitation, but the initial cohort reported the value it provided: the revitalized process identified critical program needs and improved collaboration across MSMU. Where once no one wanted to do program review, now, there is enthusiasm which continues to grow. The program review process continues to adapt and improve to meet changing needs.

Food provided. Check the Whova app for a detailed menu.



4:30 PM-5:15 PM

Exploring Overlooked Equity Gaps in Persistence and Graduation Rates

Monument Peak

Speaker: Elka Lacno-Musngi

The moral imperative to close equity gaps is not well served by metrics that focus on aggregate demographic factors (e.g., graduation rate gaps between Underrepresented Minorities (URM) and Non-Underrepresented Minorities (Non-URM)) or that overlook the intersectionality of demographic identities. Many of our students belong to multiple historically underserved groups (e.g., are First Generation and Pell grant recipients). Additionally, the commonly used student groups Underrepresented Minority (URM) and Non-underrepresented Minority (Non-URM) aggregates ethnicities in a way that can mask larger equity gaps for some of their constituent groups. This presentation will discuss an interactive data visualization that allows users to view disaggregated race/ethnic groups and view the association of intersectional population identities with student graduation and retention rates.

5:15 PM-7:45 PM

President's Reception: Movie Screening of "This Changes Everything" & Virtual Q&A with Executive Producer Madeline Di Nonno

Grand Sierra Ballroom

We are excited for our Wednesday night movie screening of *This Changes Everything*, a documentary on the disparity and sex discrimination in Hollywood. The screening is followed by a virtual Q&A with Madeline Di Nonno, Executive Producer and President and CEO of the Geena Davis Institute on Gender in Media, the leading research driven advocacy organization working within the entertainment and media industry to create gender balance, foster inclusion and reduce negative stereotyping in family entertainment media.

EVENT SCHEDULE



THURSDAY, OCTOBER 28

All events in Pacific Time

8:00 AM-9:30 AM

Breakfast Buffet

Grand Sierra Ballroom



BREAKFAST MENU OF THE DAY

- Sliced Vine and Tree-Ripened Fruit
- Assorted Muffins and Pastries
- Steel Cut Irish Oatmeal, Raisins, and Brown Sugar
- Fluffy Scrambled Eggs with Chives and Cheddar
- Applewood Smoked Bacon
- Selection of Freshly Squeezed Juices
- Freshly Brewed Regular Coffee, Decaffeinated Coffee, and Specialty Tea

10:00 AM-10:45 AM

Predictive modeling project success through conversation, process, and transparency

Monument Peak

Speaker: RP Ruiz

Predictive models are sometimes delivered as black boxes treated as if they're imbued with magic data science pixie dust. This lack of transparency makes it difficult to understand and mitigate the effects of changing conditions, like we've seen during the pandemic, or to determine whether the model is performing poorly for a subset of the population, potentially perpetuating biases.

An alternative is investing in predictive modeling as a process that manifests itself as an ongoing conversation between subject matter experts at each institution and the data scientists training the models, with a focus on delivering a model that can be used to inform both policies and interventions to improve individual student outcomes.

Today's presentation will walk you through the contours of this conversation and help set expectations for predictive modeling, while introducing helpful concepts you can use to orient yourself and your colleagues when navigating your next predictive modeling project.

9:30 AM-10:00 AM

Sponsor Exhibit/Networking

Check out the Exhibitors

Take a break, network, and visit one of our sponsor booths in the exhibit hall for the chance to win a prize! Submit an inquiry at each booth and be entered to win a \$10 Amazon gift card.

9:30 AM-10:45 AM

Building a Reproducible Equity Report in R

Castle Peak

Speaker: Randall Madsen, Michael Gonzalez

R is a free and robust programming language used for statistics, data analysis, and data visualization. In this beginner-level workshop, we guide participants through the basics of R using a de-identified student data set. Using pre-written code, participants will learn how to read data into R and install specific packages for data cleaning and data analysis. We conclude the workshop by creating a reproducible report exploring key metrics related to equity, diversity, and inclusion. All hands-on activities will be completed using RStudio Cloud, a web-based platform that allows attendees to use R directly from their web browser. This workshop does not require any software installation, but participants will need to create a free RStudio Cloud account.

10:00 AM-10:45 AM

IR101: Show Me the Numbers: Basic Principles of Data Visualization

Emigrant Peak

Speaker: Lisa Trescott

Join 2021 Tableau Iron Viz Finalist, Lisa Trescott, in a session covering the fundamentals of data visualization. She'll discuss best practices for using color, text, and layouts to create impactful and engaging reports and dashboards. You'll learn how to choose the best chart to showcase your data, streamline your visuals by removing "chartjunk", and leverage preattentive attributes to make your insights pop. See before and after chart transformations from Lisa's own work, and discover additional resources to help you get started on your data visualization journey.

EVENT SCHEDULE



THURSDAY, OCTOBER 28

All events in Pacific Time

10:00 AM-10:45 AM

Making Assessment “Personal”: Unpacking Student Learning and Engagement

Pyramid Peak

Speakers: Rohit Murarka, Robert Dawson

Assessment is commonly viewed as an accountability measure to fulfill accreditation requirements for higher education institutions. As such, the focus on institutional effectiveness often leads to data collection and analysis efforts that examine aggregated data trends. While valuable in informing continuous improvement, such aggregated data may unintentionally mask pockets of improvements at the local levels. That is, without disaggregating the data, we could overlook potential areas of improvement in our assessment efforts. At California State University, Fullerton, we have developed a data-driven campus assessment culture that places an emphasis on data disaggregation while assessing overall program outcomes to ensure that different student groups and experiences are not overlooked. This session will showcase concrete examples – both curricular and co-curricular - of how data disaggregation efforts help enhance institutional and program assessment, revealing critical areas for improvement despite positive assessment findings, and thus making assessment “personal” for the diverse student population.



11:00 AM-11:45 AM

Informational on a Future CAIR Book/Article/Chapter Club

Emigrant Peak

Speaker: Susana Santos

It has been said that Book clubs provide a supportive environment which facilitates both social and reading engagement (Bernstein- Ellis & Elman, 2006). This is a discussion session for anyone in the field of Institutional Research interested in engaging and discussing a future of a CAIR book club. The results from the session will inform next steps to promote engagement of books/articles/chapters that can help inform the CAIR community on topics of interest in our field.

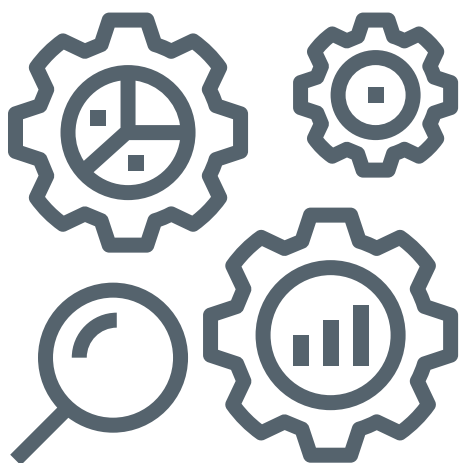
11:00 AM-11:45 AM

Needs Assessment at a Rural College Center Amidst COVID-19

Castle Peak

Speakers: Erik Cooper, Kim Bateman, Kiersten Kelly

Sierra College leadership had planned to conduct a survey of student needs and mental health in spring 2020 at our Tahoe-Truckee Center in Truckee, CA. As a result of the pandemic, the nature of the survey changed to both address the original topic, and how the pandemic was influencing student well-being, such as mental health, access to health care, food insecurity, and access to broadband internet infrastructure. This session will explore the results of the survey, the actions that the Tahoe-Truckee Center took in response to the results, and how Sierra College partnered with the Sierra Community House to better support students.



EVENT SCHEDULE



THURSDAY, OCTOBER 28

All events in Pacific Time

11:00 AM-11:45 AM

Graduation predictive model to support student success and GI2025

Pyramid Peak

Speaker: Afshin Karimi

While Cal State Fullerton is on track to meet the goals of the CSU Graduation Initiative 2025, one area needing attention is the freshman four-year graduation rate. To guide data-driven initiatives to address this issue, we developed a graduation prediction model.

The model predicts four-year graduation outcome of the incoming freshman early in their careers, allowing time for interventions starting students' second semester. The model was built using the supervised machine learning algorithms. Historical student data with known outcomes were used for training. The model was tested and launched on our fall 20 freshman cohort after their 1st semester this year, and has led to the development of various support strategies for at-risk students, including prioritized advising, summer freshman grants, and "leaping into sophomore year" programs.

The session audience will learn about the process of developing a graduation prediction model and how it can help drive campus-wide student success efforts.

12:00 PM-1:45 PM

Keynote Luncheon: Equity for What? The Promise and Possibilities of Repurposing Research

Grand Sierra Ballroom

Speaker: Dr. Jeff Duncan-Andrade

This session will be a dialogue with audience generated problems of practice as we try to better use the tools of research and data to create institutional norms, practice, and cultures that are more equitable and responsive to the most vulnerable students and communities.



11:00 AM-11:45 AM

Diversity, Campus Climate, and Student Success at University of California

Monument Peak

Speakers: Tongshan Chang, Ola Popoola, Yang Yang, Courtney Sanders

One of the most challenging issues facing American higher education and thus one of the most important topics in institutional research is how to ensure student enrollment reflects our society. Over the past few decades, more attention has been devoted to increasing racial/ethnic diversity, enhancing campus climate, and eliminating equity gaps. In this session, we first present enrollment data to examine diversity over two decades at the University of California (UC) and the racial/ethnic gap between high school graduates and UC enrollees. Second, we analyze student perceptions and attitudes towards campus climate longitudinally using UC Undergraduate Experience Survey data. Third, we discuss student success in terms of persistence and graduation rates and present our analysis of the relationship between student perceptions of climate and their outcomes. Participants in this session will learn methods to examine campus climate, racial/ethnic diversity, and student success.

Entree

- Del Rio Mixed Green Salad, Cherry Tomatoes, Shaved Fennel, Radish, Champagne Vinaigrette
- Mt. Lassen Trout, Orange Brown Butter, Capers, Pecans
- Smoked Chicken Breast, High Country BBQ Sauce
- Lemon-Tarragon Rice
- Swiss Chard and Maple Roasted Heirloom Carrots

Desserts

- Hot Apple with Almond Paste Filling and Vanilla Cream Sauce
- Toasted Pistachio Cheesecake

EVENT SCHEDULE



THURSDAY, OCTOBER 28

All events in Pacific Time

1:45PM-2:15PM

Sponsor Exhibit/Networking

Check out the Exhibitors

Take a break, network, and visit one of our sponsor booths in the exhibit hall for the chance to win a prize! Submit an inquiry at each booth and be entered to win a \$10 Amazon gift card.

2:15 PM-3:00 PM

IR101: SQL for IR Beginners

Emigrant Peak

Speaker: Roop Prabhu

This session will be for IR professionals, especially those who are new to the profession, looking to understand how SQL can be a very helpful tool in assisting with basic IR functions. The presentation will include a discussion on what SQL is (and isn't), the structure of SQL, how SQL can be used to create and organize an IR database, and how SQL can be used to perform different types of IR reporting. Having used SQL extensively and often in all my IR positions, I will discuss the different ways SQL has made my IR tasks more efficient and how I have used SQL in conjunction with other software systems, like R and Tableau. Importantly, the presentation will also include a tutorial on how to read and write basic SQL code using specific IR examples.

2:15 PM-3:00 PM

A New System for Student Surveys at UC Davis

Castle Peak

Speaker: Meryl Motika, Erika Jackson

We put together a collaboration between Institutional Research, Undergraduate Education, and Student Affairs to create a cohesive approach across the university for managing student surveys. The goal was to reduce duplication and survey fatigue and increase response rates while also increasing the quality and use of survey data. A key element was ensuring students had access to contribute questions and to see survey results. The new system is being implemented in Fall 2021.

2:15 PM-3:00 PM

The RP Group's Equity Journey

Monument Peak

Speaker: Erik Cooper

Over the past 18 months, the RP Group is attempting to re-center equity in its research and professional development, as well as better integrating it into its representation model. While our journey has just begun, this session will explore why we're doing what we're doing, how we're doing it, and where we'd like to go.

2:15 PM-3:00 PM

Virtual Learning: Student and Faculty Perceptions of Synchronous Courses

Pyramid Peak

Speaker: Melissa Bowen, Nakysa Cummings

Join Cerro Coso institutional researchers and our faculty research partners as we share highlights from our longitudinal research project examining student and faculty perceptions of synchronous and asynchronous courses during the COVID-19 pandemic. Our intent is to leverage research that will inform the colleges' work in strengthening equitable practices for students that may have limited access to technology necessary for distance learning while examining possible contributing factors, such as age, student type, socioeconomic status, etc. Synchronous courses (courses with a scheduled meeting time, conducted via Zoom) have become especially prevalent. However, many important questions about this instructional method remain unanswered. One is; what is a student's sense of community, collaboration, and overall satisfaction in synchronous courses and how do these differ from asynchronous online courses? Expanding on Moore's Theory of Transactional Distance perceived collaboration, social presence, and overall satisfaction can influence how students perform (Moore M.G., 1991. Distance Education Theory).

EVENT SCHEDULE



THURSDAY, OCTOBER 28

All events in Pacific Time

3:00 PM-3:45PM

Coffee Break

Castle Cascades



BEVERAGES

Starbucks Regular Coffee

Starbucks Decaffeinated Coffee

Assorted of Specialty Teas

SNACKS

Assortment of Miniature Muffins

Assortment of Miniature Danish

3:45 PM-4:30 PM

Stopout Student Advocacy and Support

Monument Peak

Speakers: Corinne Townsend, Cinnamon Danube

To support and advocate for the success of all students, it is important to understand why students stop out before completing their degrees. UC Merced has a committee focused on stopout students with two goals: (1) create a degree completion pathway for stopouts and (2) identify strategies to better support and advocate for students so that they do not stop out. In this presentation, we describe how Institutional Research and Decision Support (IRDS) supports this committee by sharing key research findings and a "leavers" data dashboard. Our research considers the characteristics of students who leave, their subsequent educational pursuits, and their responses on the University of California Undergraduate Experience Survey (UCUES) that shed light on potential reasons for leaving. We also share strategies for having engaging data discussions that help stakeholders use data to develop campus initiatives that advocate for and support all students.

3:45 PM-4:30 PM

Classroom Diversity and Student Dropout: New Evidence from Panel Data

Pyramid Peak

Speaker: Serge Herzog

Using panel data to track the 4-year dropout risk of students ($N=3,545$) at a research university, we employ a discrete-time-to-event history model to estimate the marginal effect of classroom ethnic/racial composition while controlling for both time-variant and time-invariant student-level and classroom-level factors on demographics, precollege preparation, college academic experience, campus living arrangement, and financial aid support. Findings show that: 1) Effects of classroom ethnic/racial composition vary across student racial identity, first-generation status, and level of academic preparation of classroom peers; exposure to Asian classmates is associated with lower dropout risk for black students, while exposure to underrepresented minority (URM, excluding Asians) classmates is associated with lower dropout risk for both Hispanic and first-generation students. 2) Semester-to-semester rise in exposure to Asian classmates is associated with a lower dropout risk for black and non-local students residing within the state.

3:45 PM-4:30 PM

WSCUC AMA at CAIR 2021

Castle Peak

Speakers: David Chase, Stephanie Huie

Please come to this dynamic and interactive conversation to get updates about what's going on at the WASC Senior College & University Commission and for an AMA - WSCUC staff is looking forward to you asking them anything.

EVENT SCHEDULE



THURSDAY, OCTOBER 28

All events in Pacific Time

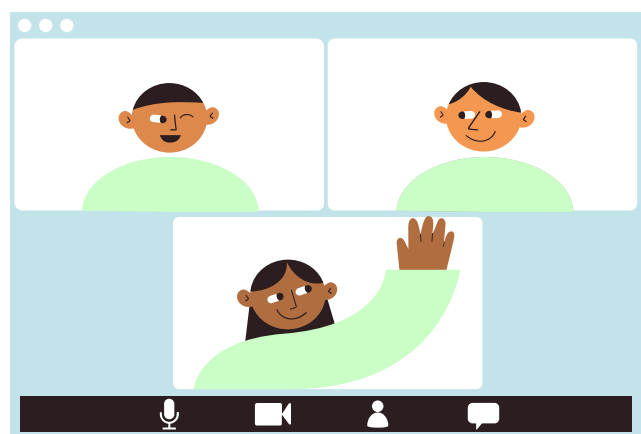
3:45 PM-4:30 PM

Conducting Focus Groups in Times of Social Distancing

Emigrant Peak

Speakers: Alex Nottbohm, Cory Cowan

In March 2020, the coronavirus outbreak (COVID-19) was declared a pandemic by the World Health Organization. During the early stages of the pandemic, the university was required to make substantial changes to its typical daily operations, leaving students to quickly adapt to a new normal. Through a series of virtual interviews and focus groups with students in 2020, we heard from students about their experiences during the COVID-19 pandemic. Using students' own quotes and stories, we were able to present findings to senior leadership and advocate for additional student support such as increased mental health services. While focus groups are typically conducted in-person, using virtual methods can rectify challenges typically encountered with collecting qualitative data in person such as connecting with hard to reach groups of students. Additionally, virtual focus groups can be used in a post-pandemic world and can rectify challenges commonly encountered with in-person qualitative data collection.



4:45 PM-5:30 PM

Are We Burdening Low Income Students? Work and Loan Expectations

Pyramid Peak

Speakers: Joyce Cleaver

The UC's Educational Financing Model currently assumes that all students, regardless of family background, should contribute to covering the cost of their education through work and loans. The expectation is that students work between 6 to 20 hours per week while in school and borrow between 5 to 9% of the average post-graduation salary, regardless of family income. The rationale is that if students have a stake in their own education, they will graduate more quickly. UC Davis is exploring how these expectations may affect low-income families differently. In 2019, we initiated a study that reduced the loan expectation for randomly selected incoming low-income freshmen. An additional \$2,000 per year of grant, on top of the usual award amount, was given to 47 of these students, while another 90 students received an additional \$5,500 per year. This presentation provides findings on student outcomes and loan taking behavior of these cohorts.

EVENT SCHEDULE



THURSDAY, OCTOBER 28

All events in Pacific Time

4:45 PM-5:30 PM

Making the most of data infrastructure in the pandemic

Castle Peak

Speakers: Meryl Motika, Marco Molinaro, Matt Steinwachs

When the pandemic arrived in March 2020, many universities including UC Davis used surveys to learn how remote instruction was affecting students' experiences and to determine what support services were needed. At UC Davis, two things helped tremendously in our ability to create, implement, and take action based on these student surveys: close collaborations leading to survey-sharing with units around campus, and a pre-existing tool for sharing student data with faculty. Thanks to these foundations, we received a nearly 40% response rate to our initial survey. More than 1000 instructors and administrators viewed the data on our Know Your Students tool. This initial success led to further collaborations and interest in student data that have continued through the shift back to in-person instruction.

4:45 PM-5:30 PM

IR101: Survey Research

Emigrant Peak

Speakers: Cinamon Danube

Institutional Research/Effectiveness practitioners are often asked to conduct survey research on their campuses. However, many IR/IE professionals have minimal experience and training in survey research. This session has two goals. First, I will outline the survey research process as it pertains to using surveys to generate applied and actionable insights on our campuses. Second, I will share strategies for identifying survey goals, developing effective survey instruments, and effectively programming surveys in one's preferred online survey administration tool. I will provide programming examples in Qualtrics, but these general programming strategies can be applied to many tools such as Google Forms, Survey Monkey, and Question Pro. I will engage attendees in the process of developing effective surveys by sharing specific examples (e.g., survey question dos and don'ts) that they can apply to their own survey research projects. This session is for anyone who wants to brush up on their survey research skills.

4:45 PM-5:30 PM

Maps for Data Advocacy: Informing Institutional Diversity, Equity and Inclusion

Monument Peak

Speakers: Rohit Murarka, Robert Dawson, Mike Biesiada

It is of increasing importance for higher education institutions to embed Diversity, Equity and Inclusion (DEI) in all policies and practices. As such, a sophisticated understanding of DEI beyond demographic categorizations is critical, and such understanding places an ever-increasing demand on institutional researchers to provide innovative and relevant data to support DEI efforts. At California State University, Fullerton we have leveraged geospatial data to provide a variety of dashboards to inform DEI policymakers. These data in student dashboards helped focus admission and outreach efforts in geographical areas with student populations that are of the university's DEI concerns, while similar data in the faculty dashboards helped highlight a different aspect of diversity that is critical to faculty success. This session will showcase these dashboards and how they are being used to drive data-informed DEI decision making.



6:00 PM-8:00 PM
8:00 PM-10:00 PM

DINNER ON YOUR OWN
CAIR GAME NIGHT
(MONTAGNA)



EVENT SCHEDULE



FRIDAY, OCTOBER 29

All events in Pacific Time

8:30 AM-10:00 AM

Breakfast Buffet

Grand Sierra Ballroom



BREAKFAST MENU OF THE DAY

- Sliced Vine and Tree-Ripened Fruit
- Assorted Muffins and Pastries
- Fluffy Scrambled Eggs Roasted Poblano Peppers
- Papas Bravas with Smoked Paprika and Spicy Aioli
- Carnitas with Red Onions & Cilantro
- Corn and Flour Tortillas
- Salsa, Sour Cream, Guacamole, Cheddar Cheese
- Selection of Freshly Squeezed Juices
- Freshly Brewed Regular Coffee, Decaffeinated Coffee, and Specialty Tea

10:00 AM-10:45 AM

A finger on the pulse: Responding to students during crises

Pyramid Peak

Speaker: Audrey Thomas

Student pulse surveys allow the administration to get a snapshot of student experience and needs with quick, easy student engagement. The key with pulse surveys is to provide a rapid response that addresses student feedback and stated needs. During the pandemic, UC Berkeley deployed student pulse surveys every four to six weeks. We worked with units across campus to promptly address the student needs that surfaced in the surveys. For example, we knew from the survey that over 60% of undergraduates were near campus and many said they needed private spaces to attend remote classes and to study, so we let them know about the opportunity to book individual rooms in the student union. In this session, we will lead participants through an exercise about the potential use of pulse surveys on their campus, including working group membership, collaborations with student-facing units, and opportune times to deploy pulse surveys.

10:15 AM-11:00 AM

Deepening collaborations between institutional research and faculty: making equity visible

Monument Peak

Speakers: Reem Jaafar, Milena Cuellar

LaGuardia Community College is an urban, open-admission two-year college in Queens, New York, serving a diverse population of students from over 150 countries. The Office of Institutional Research and Assessment (OIRA) works closely with all college stakeholders to analyze data and identify trends to better help devise solutions to various issues. For faculty like us, the accessibility of the office and the data on the Institutional effectiveness website provides descriptive evidence that helps strategize and take actions at the course and program levels, thus “humanizing the data”. For example, data provided by OIRA showcase equity issues in STEM majors (dashboards: <https://www.laguardia.edu/ir/>). In this presentation, we aim to i) demonstrate how IR personnels and faculty can collaborate to generate evidence of impact on equity related issues, ii) how to institutionalize some of these collaborations within the framework of Institutional Effectiveness to address equity gaps, particularly in STEM.

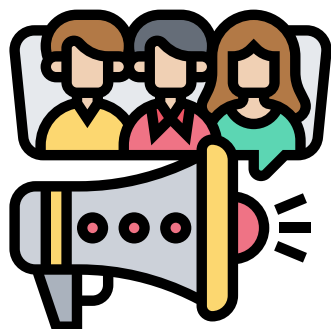


EVENT SCHEDULE



FRIDAY, OCTOBER 29

All events in Pacific Time



10:00 AM-10:45 AM

Amplifying Student Voices: LGBTQ+ Focus Groups with the SDCCD

Castle Peak

Speaker: Jaime Seiverd

The San Diego Community College District conducted focus groups in Spring 2020 and Fall 2020 to better understand diverse LGBTQ+ student experiences to inform future programming and advocate for support services for LGBTQ+ students. Students discussed their LGBTQ+ and intersecting identities and how those identities inform their experiences with campus climate, the curriculum and classroom, various support services, and extracurricular activities. This presentation will detail the methodology and results of this project, lessons learned, and engage participants in the possible ways in which they can leverage qualitative data collection to advocate for students from marginalized populations like the LGBTQ+ community in a way that honors the complex and multifaceted nature of their personhood. This presentation aims to honor the theme of data for advocacy by demonstrating the importance of qualitative data in DEI work and the ways in which IR can be utilized to uplift the voices of underrepresented students.

10:00 AM-10:45 AM

From WU to Departure: Academic Disengagement and Student Attrition

Emigrant Peak

Speakers: Fanny Yeung, Satomi Furuichi

This session will present the impact of academic disengagement on student retention at Cal State East Bay by examining four years of data that included trends of unauthorized withdraws (WU's) from courses and the corresponding student departures. Findings suggest underrepresented racial minorities, first generation students, and Pell-eligible students are the most impacted by academic disengagement, which corresponds to higher rates of attrition. The correlation between WU's and departure is especially pronounced in courses taken by first-year students.

In alignment with the conference theme, this session will focus on how IR can use data to identify barriers related to student retention and how to use that data to advocate for institutional action.

Session outcomes include identifying institutional course data as a proxy for academic disengagement; recognizing the connection between academic disengagement and student departure; and translating data into talking points designed to prompt institutional action.

11:00 AM-11:45 AM

IR101: Stages of An IR Career

Emigrant Peak

Speaker: Vikash Lakhani

Explore potential career paths for newcomers to IR. Learn of ways IR professionals can be involved in other aspects of higher education.



EVENT SCHEDULE



FRIDAY, OCTOBER 29

All events in Pacific Time

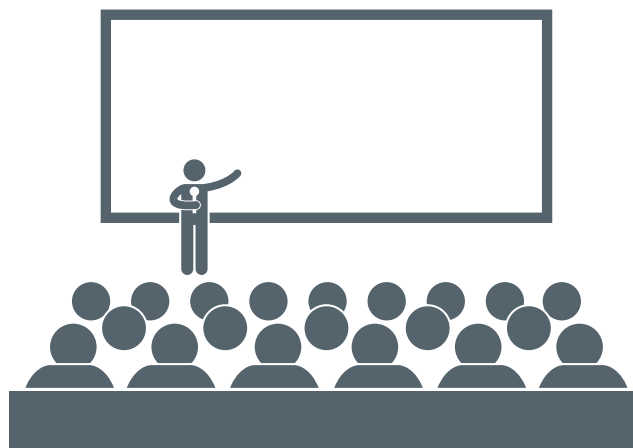
11:00 AM-11:45 AM

Utilizing Institutional Data, Collaboration and Interactive Dashboards in Bridging Gaps

Castle Peak

Speaker: Heidi Carty

Institutional Research has a unique role in presenting student outcome data as a tool for assessment, institutional effectiveness and program review to units across campus. With a focus on transitioning to interactive dashboards, ensuring critical safeguards of data and collaborating about data interpretation with consumers, IR can provide a rich resource and experience that allow end-users more autonomy over data views provided by dashboards. Participants will learn about insightful outcome data, such as quarterly grades and units passed, accessible through dashboard views to support assessment of student success and retention programs and inform institutional policy. Techniques for protecting student privacy to ensure confidentiality of small groups ($N < 10$) are demonstrated. A discussion of the importance of cautiously interpreting differences found with small groups and how to determine trends is presented.



11:00 AM-11:45 AM

Assessing a First-Year Experience Course Using Propensity Score Matching

Monument Peak

Speakers: Mike Biesiada, Noha Abdou, Kevin Yang

Student retention and completion has long been a concern among educators and administrators. Consequently, Universities are implementing different strategies to improve student retention and completion. Among these strategies include interventions such as the first-year experience (FYE) programs. However, the effectiveness of FYE programs has been varied due to its diverse forms of implementation. Using a propensity score model, we assessed the effectiveness of FYE programs at CSUF focusing on two primary areas of student success: (a) student retention, and (b) student performance. We use the propensity scores to solve a dimensionality problem by compressing the relevant covariate characteristics into a convenient single score. Preliminary results suggest that students taking University 100 has a favorable impact on one-year retention and GPA. Lastly, we plan to use a live polling website to interact with participants based on both quantitative and qualitative feedback.

EVENT SCHEDULE



FRIDAY, OCTOBER 29

All events in Pacific Time

11:00 AM-11:45 AM

Course Analytics Engaging Faculty in the Advancement of Equity

Pyramid Peak

Speaker: Elka Lacno-Musngi

Data dashboards are often created to increase constituent access to data. However, “self-serve” access does not address non-technical barriers that can prevent constituents from moving from data to action. These limitations may include a lack of awareness about what data are available, the amount of time that users have to review and understand the data, and their ability to infer meaning from the data in a statistically valid way. In this presentation, we describe a new dashboard that generates a curated data presentation individualized to each of our ~30,000 faculty. We describe the automated statistical algorithms used to identify findings relevant for each user including inequities in their grade data. This dashboard seeks to communicate what can be sensitive findings in a supportive tone that also promotes meaning making and connects faculty to a set of pedagogical actions that they can explore further and implement in their classes.

12:00 PM-1:30 PM

Closing Panel - Using Data for Advocacy: A Conversation with Advocates

Grand Sierra Ballroom

Moderator: Andrew Cress

Speaker: Stephanie Huie, Erik Cooper, Brianna Moore-Trieu, Susana Santos

Using data for advocacy takes many forms on many campuses. Join our panelists representing the California Community Colleges, University of California, and private not-for-profit institutions in a community-wide discussion surrounding the use of data to advocate on behalf of students, their success, and effective accomplishment of our role as institutional research professionals. A light lunch is provided and there will be an opportunity for questions at the end of the session.

Entree

- Soba Noodle Salad, Buckwheat Noodles, Carrots, Leeks, Red Peppers, Cilantro, Togarashi
- Spicy Cucumber Salad, Red Onion, Jalapeno, Shaved Carrot, Mint, Sambal
- Tangerine Chicken, Snow Peas
- Coriander Seared Mahi Mahi, Sweet Soy Tomato Sauce
- Stir Fry Vegetables
- Steamed Jasmine Rice

Desserts

- Macadamia Nut Pie
- Mango and Coconut Pastry Cream Tarts

DON'T FORGET

- **CHECK OUT OUR SPONSORS ON THE WHOVA APP**
- **VISIT THE EXHIBIT HALL OUTSIDE THE BALLROOM**
- **NETWORK WITH OTHERS UNDER THE COMMUNITY BOARD**
- **ASK QUESTIONS UNDER SESSIONS Q+A**
- **COMPLETE YOUR SESSION EVALUATIONS**
- **HAVE A QUESTION? ASK A CAIR BOARD MEMBER ON THE COMMUNITY BOARD**

Transform Education for Everyone with Assessment Data from ExamSoft

Why ExamSoft

- **Reporting & Analytics**

Detailed reports and actionable data give instructors a clear view of student and curriculum performance, helping to close any learning gaps quickly.

- **Retention & Remediation**

Reports from ExamSoft enable educators to provide targeted and immediate feedback to students, helping to improve learning outcomes and retention.

- **Flexibility**

ExamSoft allows faculty to give exams in a remote setting, in class, or a hybrid of the two. No matter the modality, learners and educators alike will have a consistent, reliable, and secure exam experience.

- **Integrity**

Offline digital assessments with optional remote proctoring ensure that exam content is protected from academic dishonesty.

- **Accreditation**

Linking exam items to specific content areas to gauge how students and programs are measuring against accreditation standards. Prepare for site visits with analytics and documentation from ExamSoft.

- **Efficiencies**

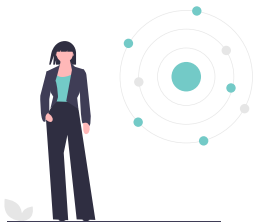
Save time with one system for exam creation, delivery, and grading. Reduce paper and printing costs with digitized exams.

Qualitative Analytics for Higher Education

Kai Analytics helps educational institutions understand the demands of their students, the concerns of their faculty, and the climate of their campus using natural language processing.



KEY SERVICES



Thematic Extraction

Our custom-built models effectively categorize customer feedback responses into **actionable themes**.



Sentiment Analysis

Quantify the qualitative. We breakdown raw comments into a **measurable polarity** between 0 (dislike) and 100 (love).



Segmentation

Customer segments often yields important differences. We cross-compare results across social-demographic customer profiles.



Quick, effective communication, left no stone unturned... Kai

Analytics was able to analyze the raw comments from our respondents quickly to identify the biggest areas of focus.

— DR. MAC POWELL, SENIOR VICE PRESIDENT, NWCCU

WE HAVE PROVEN EXPERIENCE ANALYZING QUALITATIVE DATA FROM:



STUDENT COURSE EVALUATIONS



STUDENT COURSE EVALUATIONS



STRATEGIC PLANNING



STUDENT SATISFACTION SURVEYS



FACULTY & STAFF SATISFACTION SURVEYS



ALUMNI SUCCESS SURVEYS



ALUMNI ENGAGEMENT SURVEYS



STUDENT EXIT SURVEYS



NEW STUDENT ORIENTATION SURVEYS



NON-ENROLLED STUDENT SURVEYS

NSSE

NATIONAL STANDARDIZED SURVEYS

Book a 30-minute **FREE** consultation!

Ask us anything about qualitative analysis for your higher education institutions' needs!

[BOOK NOW](#)



Want to do it yourself?

Sign up for early access to our qualitative analysis platform, Unigrams!

[SIGN UP](#)

INSTITUTIONAL RESEARCH CERTIFICATE PROGRAM

fully online

Our goal is to train you to learn the fundamental skills to effectively analyze data, control routine monitoring and – ultimately – conduct institutional research. Starting with an overview of the field, we'll teach you how to use quantitative and qualitative methodologies to create accurate research instruments and evaluate university outcomes. Our instructors are highly experienced professionals in institutional research at all levels of higher education.

extension.ucsd.edu/ireval

CERTIFICATE PROGRAM OVERVIEW

HIGHLIGHTS AND BENEFITS

- Number of courses required: 3
- Total units: 18
- Estimated cost: \$3,320
- Time to complete: 9 months
- Delivery: Online
- Can be completed in one academic year
- Small cohort size
- Real-world applications incorporated into each class

COST BREAKDOWN

- \$266 per credit unit (\$975 per course)
- Estimated total tuition cost: \$2,925
- Estimated textbook cost: \$300
- Certificate fee: \$95
- Same tuition for in-state, out-of-state, and out-of-country candidates
- Pay for each class as you go (full payment is not required up front)

ADMISSION REQUIREMENTS

- Online Application
- Statement of interest
- Bachelor's degree or higher from an accredited college or university
- Prerequisite coursework in Research Methods and Statistics in any field

CERTIFICATE REQUIREMENTS

All candidates who wish to receive the Institutional Research Certificate are required to:

- Apply to the Institutional Research Certificate program
- Pay the certificate fee
- Complete all the required online courses with a grade of "C" or better
- Finish the coursework within 5 years of beginning the program

REQUIRED CLASSES

Introduction to Institutional Research

Course number: BUSA 40942
Quarter units: 6
Quarter Offered: Fall, Winter
Delivery: Online

Applied Research in Higher Education

Course number: BUSA 40943
Quarter units: 6
Quarter Offered: Winter, Spring
Delivery: Online

Diversity Research in Institutional Research

Course number: BUSA 40944
Quarter units: 6
Quarter Offered: Spring, Summer
Delivery: Online



NOTES



Lined writing area consisting of 20 horizontal lines spaced evenly down the page for note-taking.

NOTES



NOTES



NOTES



advocacy
[noun] 'adve
n. [mass noun]
public support for
particular
advocacy