

Humanizing Data Track



Using Data
for Advocacy.
October 26-29, 2021.



Session Goals

WHO WE
ARE

PROFILE



Session Goals

- Highlight IR personnel and college stakeholders **collaborations** that **generate evidence on equity issues.**

WHO WE
ARE

PROFILE



Session Goals

- Highlight IR personnel and college stakeholders **collaborations** that **generate evidence on equity issues**.
 - Present **examples** of these collaborations to identify equity issues, particularly in **STEM**.

WHO WE
ARE

PROFILE



Session Goals

- Highlight IR personnel and college stakeholders **collaborations** that **generate evidence on equity issues**.
 - Present **examples** of these collaborations to identify equity issues, particularly in **STEM**.

For us:

WHO WE
ARE

PROFILE



Session Goals

- Highlight IR personnel and college stakeholders **collaborations** that **generate evidence on equity issues**.
 - Present **examples** of these collaborations to identify equity issues, particularly in **STEM**.

For us:

- Generate research questions to IR to **make equity issues visible**.

WHO WE
ARE

PROFILE



Session Goals

- Highlight IR personnel and college stakeholders **collaborations** that **generate evidence on equity issues**.
 - Present **examples** of these collaborations to identify equity issues, particularly in **STEM**.

For us:

- Generate research questions to IR to **make equity issues visible**.
- **Identify actions** to address equity issues.

WHO WE
ARE

PROFILE



LaGuardia
Community College

7.95 K

0.37 K

2.35 K

2.35 K

0.36 K



1 of 7
Community Colleges



LaGuardia
Community College

7.95 K

0.37 K

2.35 K

2.35 K

0.36 K



1 of 7
Community Colleges

Ranked #5 in Economic Mobility
(US Community Colleges)



LaGuardia
Community College

7.95 K

0.37 K

2.35 K

2.35 K

0.36 K



1 of 7
Community Colleges

Ranked #5 in Economic Mobility
(US Community Colleges)



LaGuardia
Community College





1 of 7
Community Colleges

Ranked #5 in Economic Mobility
(US Community Colleges)



Community College

94 Countries
54% Foreign Born
77 Languages Spoken





INSTITUTIONAL PROFILE



Credit Students
13,431



INSTITUTIONAL PROFILE

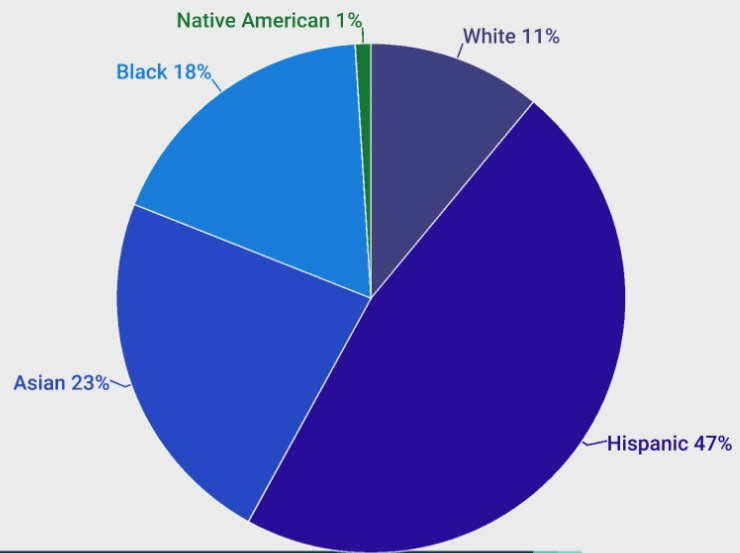


Credit Students
13,431

Total Enrollment:
16,952



INST



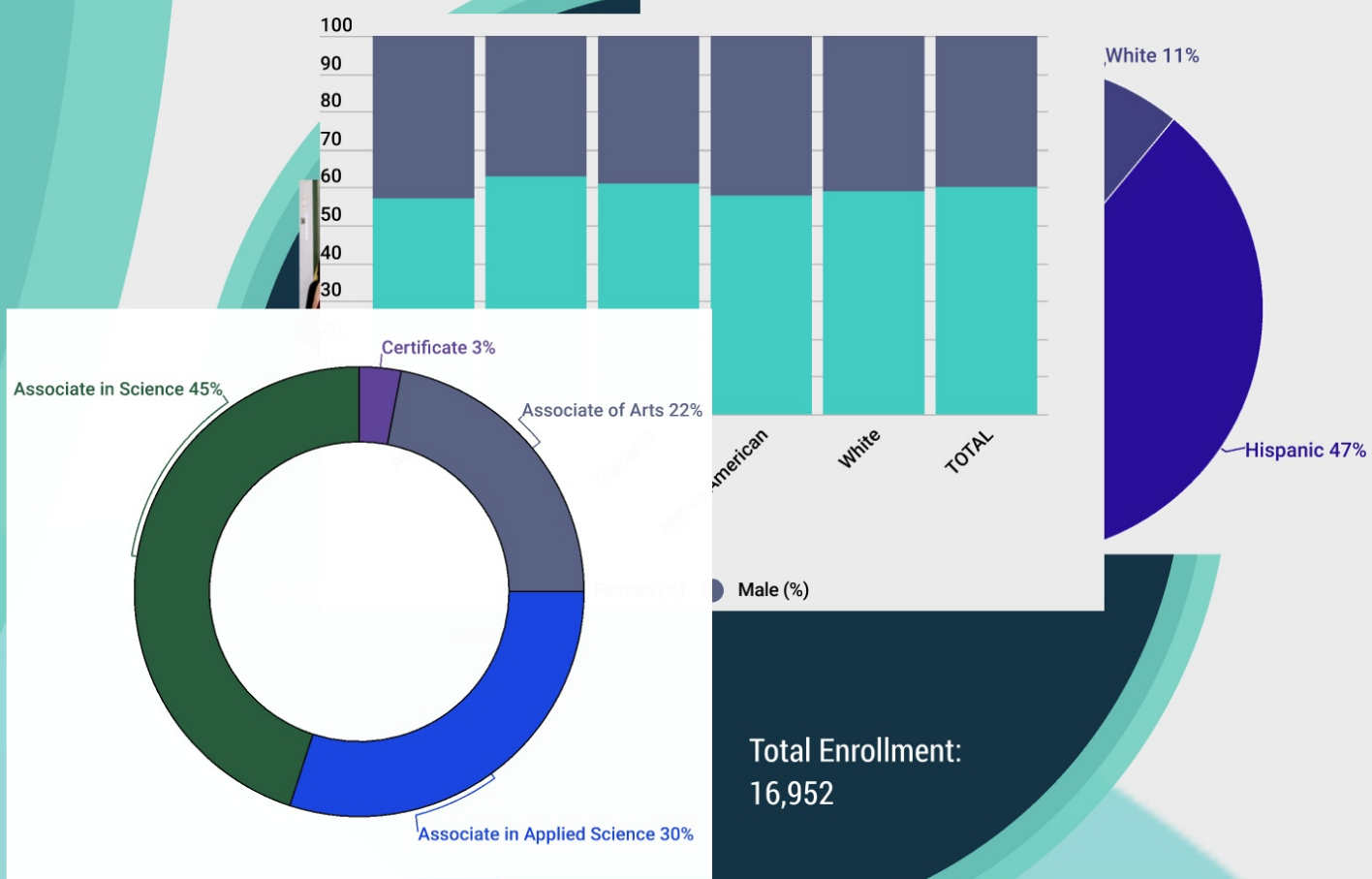
Credit Students
13,431

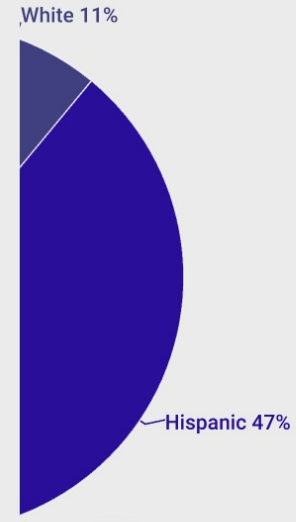
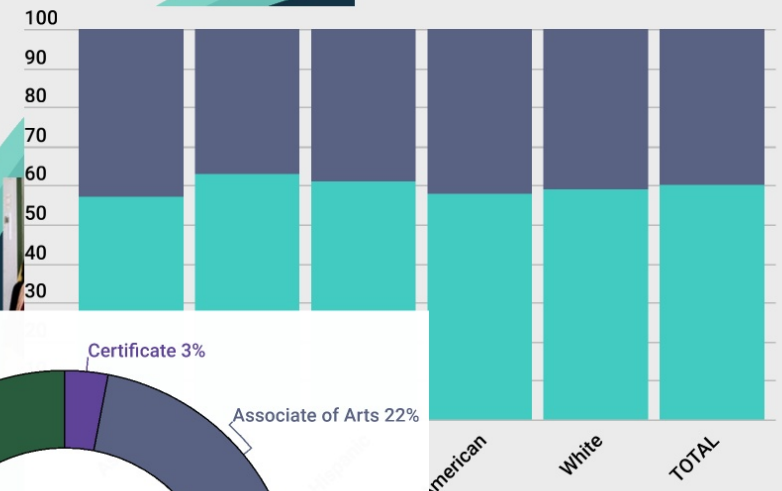
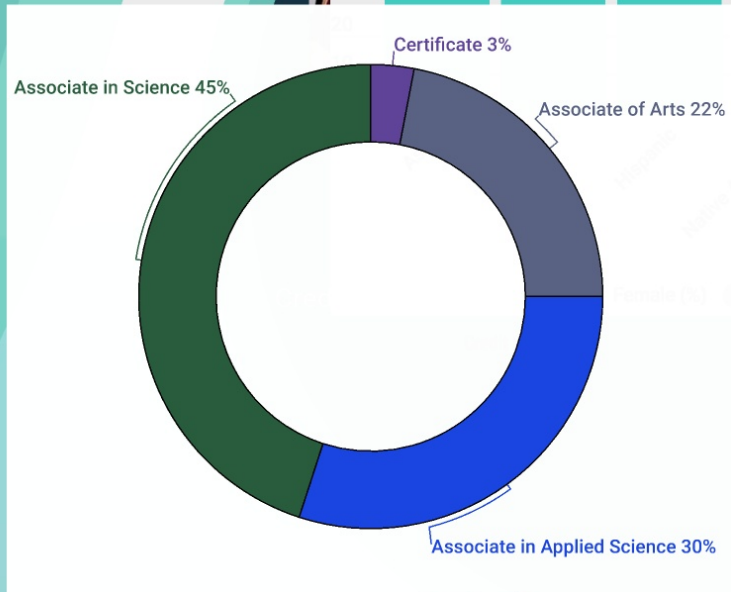
Total Enrollment:
16,952



Credit Students
13,431

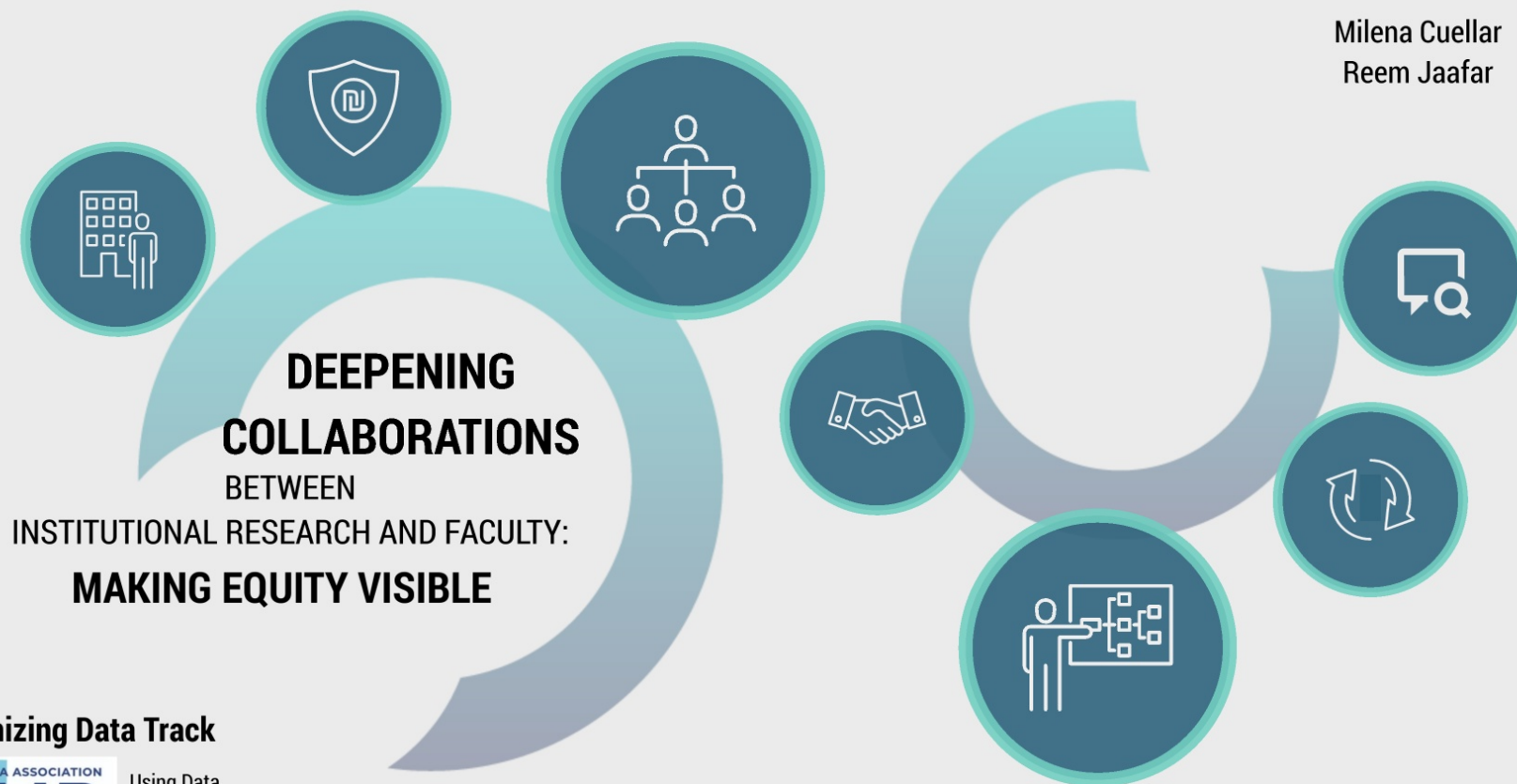
Total Enrollment:
16,952





62% Annual Income less than \$25K
 68% Received Financial Aid (80% are FT)
 69% Under 24 Years of Age

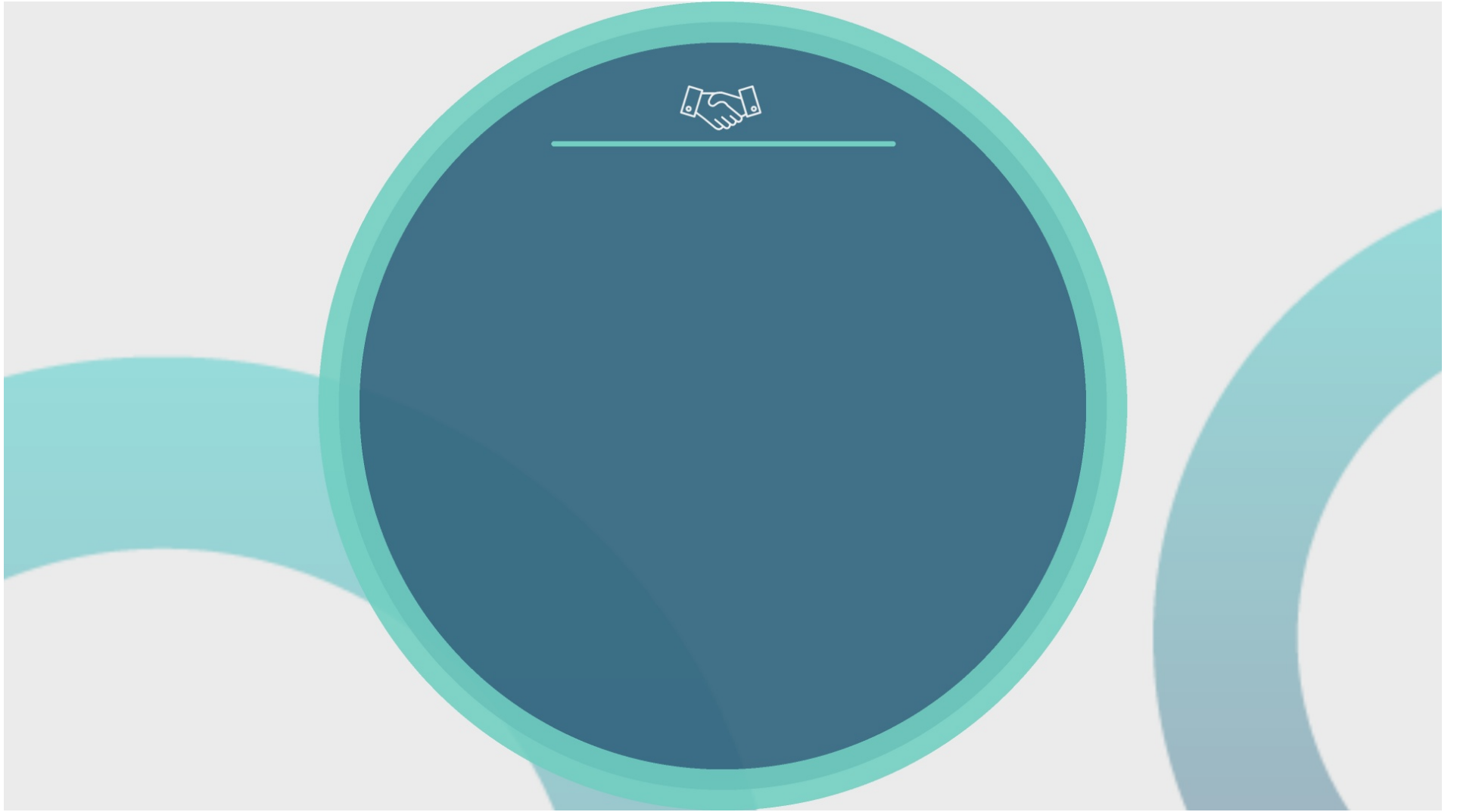
Total Enrollment:
 16,952



Humanizing Data Track



Using Data
for Advocacy.
October 26-29, 2021.





We are Mathematics Faculty



We are Mathematics Faculty

Assessment of



- Mathematics Reform
- Guided Pathways
- Programs
- Middle-States Accreditation



We are Mathematics Faculty

Assessment of

- Mathematics Reform
- Guided Pathways
- Programs
- Middle-States Accreditation



Equity



We are Mathematics Faculty

Assessment of

- Mathematics Reform
- Guided Pathways
- Programs
- Middle-States Accreditation

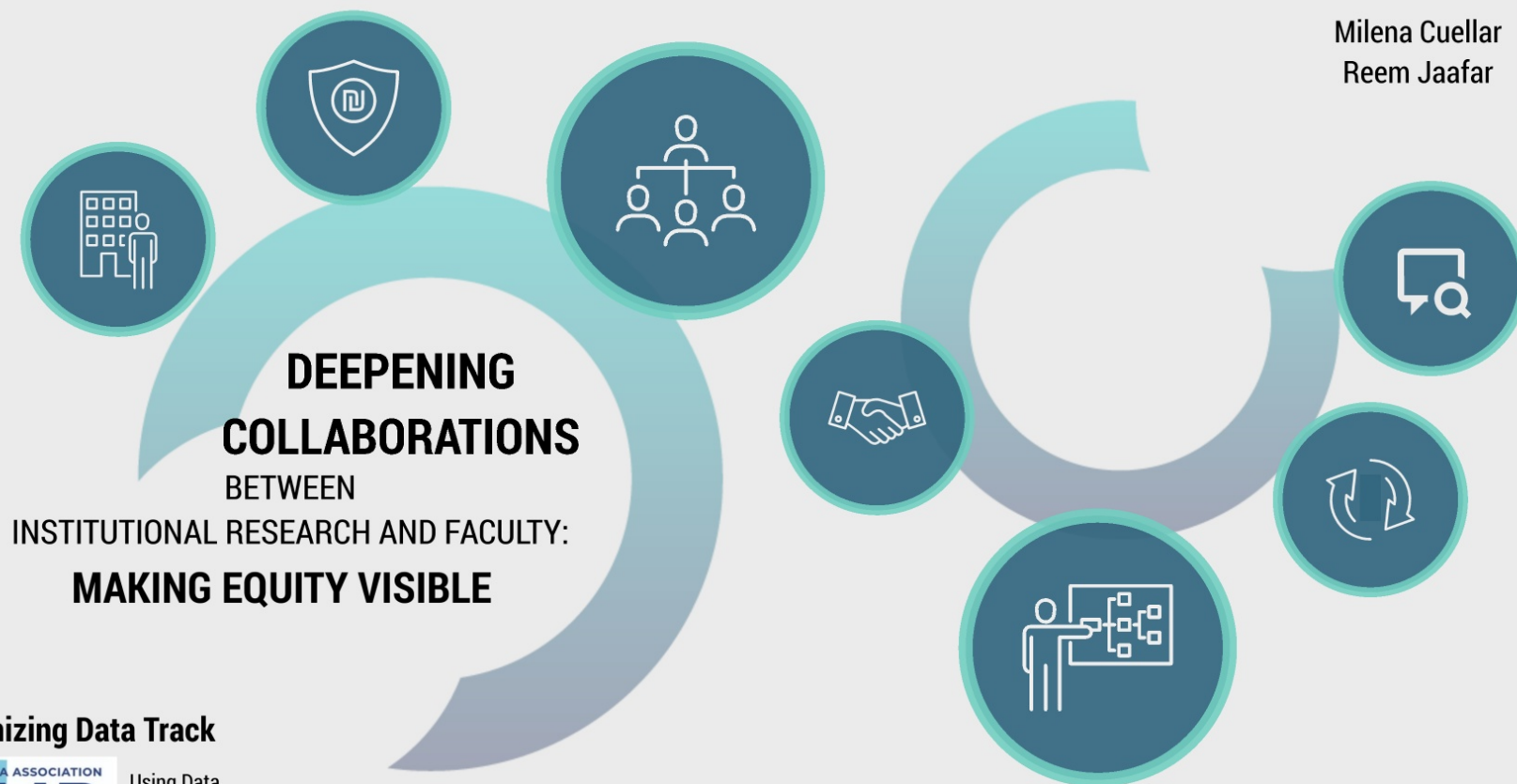


Equity

Ukhoa

What is your role at
your institution?

What do you hope
to get out of this
session?



Humanizing Data Track



Using Data
for Advocacy.
October 26-29, 2021.



COLLABORATION BETWEEN FACULTY AND INSTITUTIONAL RESEARCH

HOW ABOUT
YOU?



COLLABORATION BETWEEN FACULTY AND INSTITUTIONAL RESEARCH



DIRECT SUPPORT ON:

- Academic assessment processes (PPRs, PLOs)
- Administrative and educational units (AES)
- Program specific data for continuous improvement

HOW ABOUT
YOU?



COLLABORATION BETWEEN FACULTY AND INSTITUTIONAL RESEARCH



DIRECT SUPPORT ON:

- Academic assessment processes (PPRs, PLOs)
- Administrative and educational units (AES)
- Program specific data for continuous improvement



SPECIAL PROGRAMS ASSESSMENT:

- College discovery
- ASAP

HOW ABOUT
YOU?



COLLABORATION BETWEEN FACULTY AND INSTITUTIONAL RESEARCH



DIRECT SUPPORT ON:

- Academic assessment processes (PPRs, PLOs)
- Administrative and educational units (AES)
- Program specific data for continuous improvement



SPECIAL PROGRAMS ASSESSMENT:

- College discovery
- ASAP



Support on the assessment of
KPI for the strategic plan

HOW ABOUT
YOU?



What about at your Institution?

How Institutional Research and stakeholders (e.g., Faculty) interact at your institution?

Join by Web



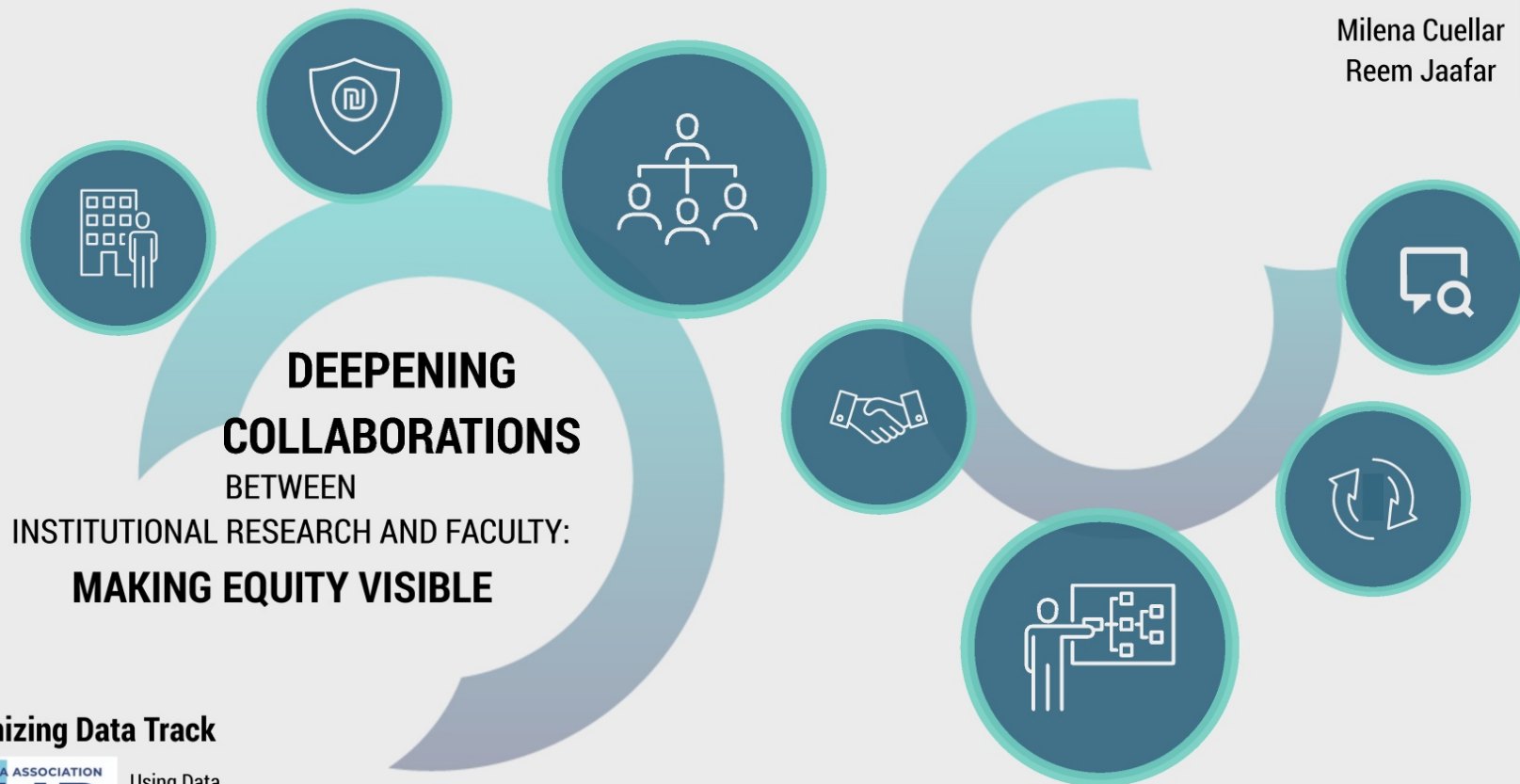
- 1 Go to **PollEv.com**
- 2 Enter **EQUITYCAIR21**
- 3 Respond to activity



0 Total Results: 0

Powered by  **Poll Everywhere**


<http://pollev.com/equitycair21>



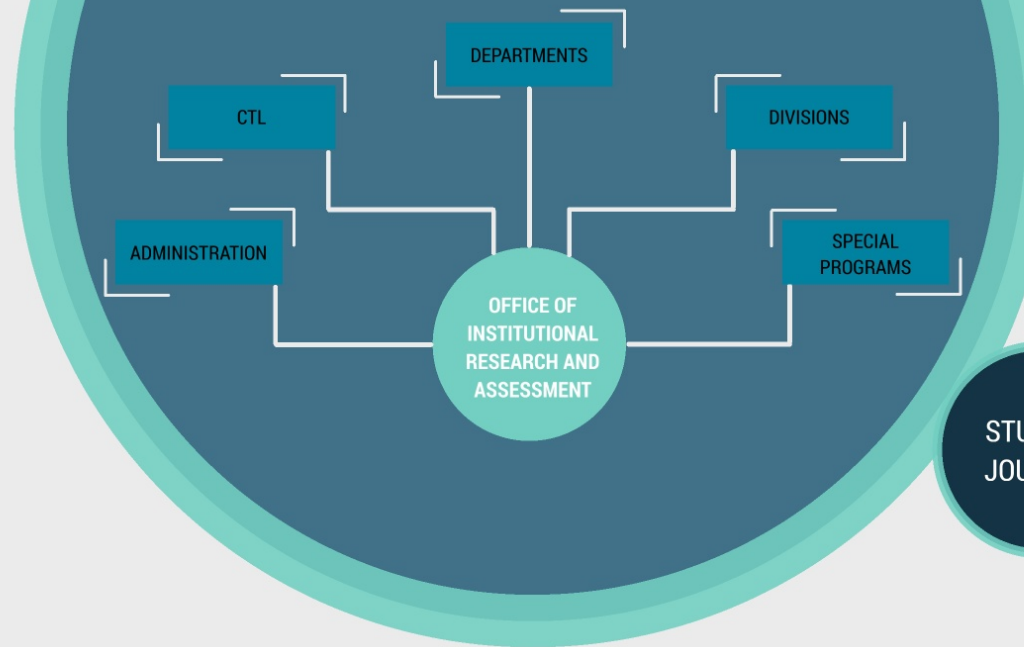
Humanizing Data Track



Using Data
for Advocacy.
October 26-29, 2021.

 **IN THE CONTEXT
OF EQUITY**

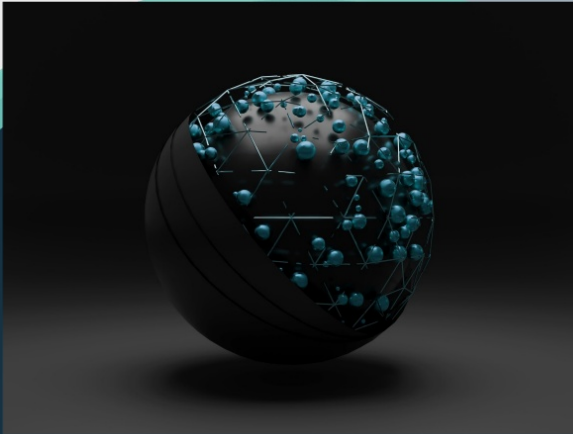
Institutional Research & Faculty Collaboration



**MICRO
TO
MACRO**


**EVIDENCE
TO
ACTION**

**STUDENT
JOURNEY**

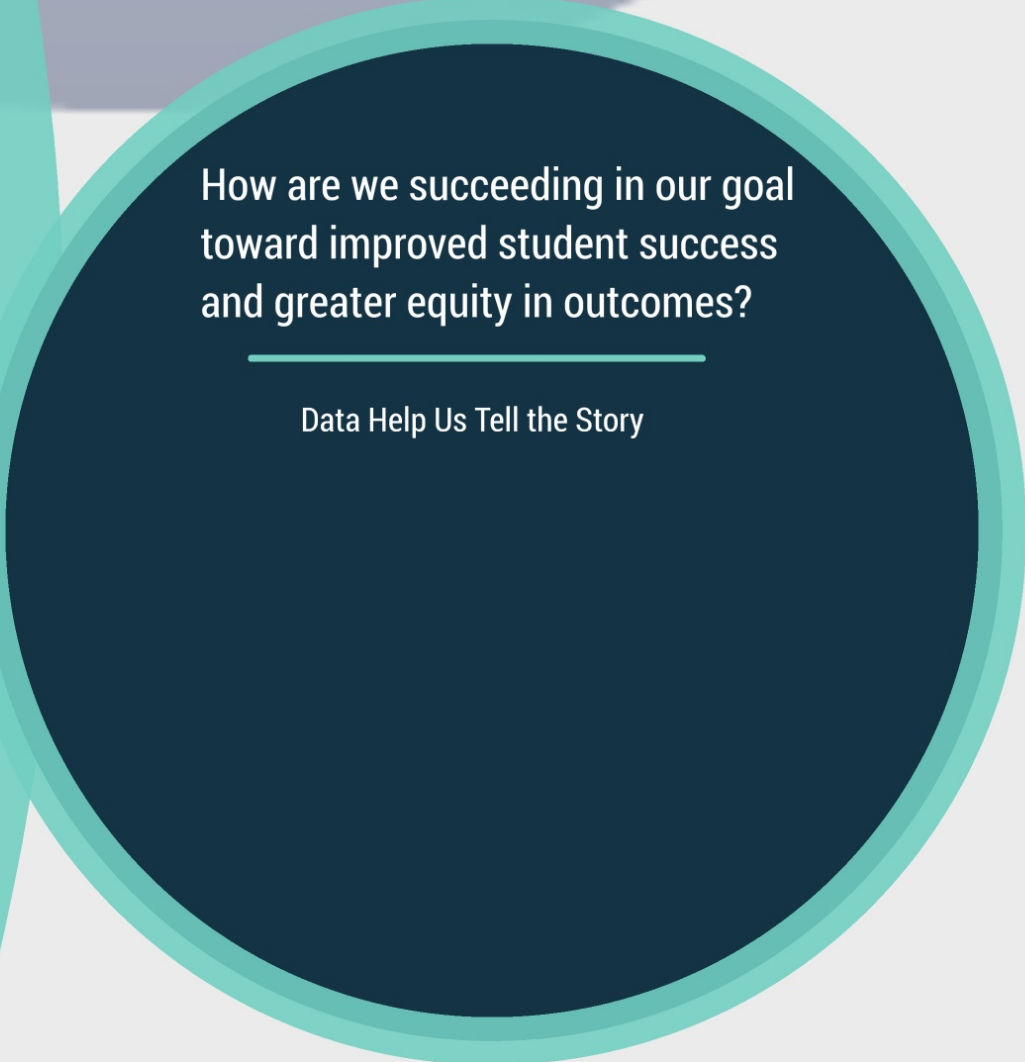


**INSTITUTIONAL RESEARCH IS THE GLUE TO
CONNECT THE INSTITUTION**

Data Helps Us Tell the Story




How are we succeeding in our goal
toward improved student success
and greater equity in outcomes?



How are we succeeding in our goal
toward improved student success
and greater equity in outcomes?

Data Help Us Tell the Story



How are we succeeding in our goal
toward improved student success
and greater equity in outcomes?

Data Help Us Tell the Story

Understand the
CURRENT
Context

How are we succeeding in our goal toward improved student success and greater equity in outcomes?

Data Help Us Tell the Story


Understand the
CURRENT
Context

How are we succeeding in our goal toward improved student success and greater equity in outcomes?

Data Help Us Tell the Story

Adapt, Adopt, Abandon
structures, policies &
processes
based on learnings

Understand the
CURRENT
Context



How are we succeeding in our goal toward improved student success and greater equity in outcomes?

Data Help Us Tell the Story

Adapt, Adopt, Abandon
structures, policies &
processes
based on learnings

Understand the
CURRENT
Context

How are we succeeding in our goal toward improved student success and greater equity in outcomes?

Data Help Us Tell the Story

Adapt, Adopt, Abandon
structures, policies &
processes
based on learnings

Understand the
CURRENT
Context

Understand the
NEW
Context

How are we succeeding in our goal toward improved student success and greater equity in outcomes?

Data Help Us Tell the Story

Adapt, Adopt, Abandon
structures, policies &
processes
based on learnings

Understand the
CURRENT
Context

Understand the
NEW
Context



Improved student success
and **greater equity** in
outcomes



UNDERSTAND
THE STUDENT JOURNEY

UNDERSTAND THE STUDENT JOURNEY

Entry



UNDERSTAND THE STUDENT JOURNEY

Entry



Exit



UNDERSTAND THE STUDENT JOURNEY

Entry



To and Through the Institution

Exit



UNDERSTAND THE STUDENT JOURNEY

Entry



To and Through the Institution



Exit



Experience

UNDERSTAND THE STUDENT JOURNEY

Entry



To and Through the Institution



Experience



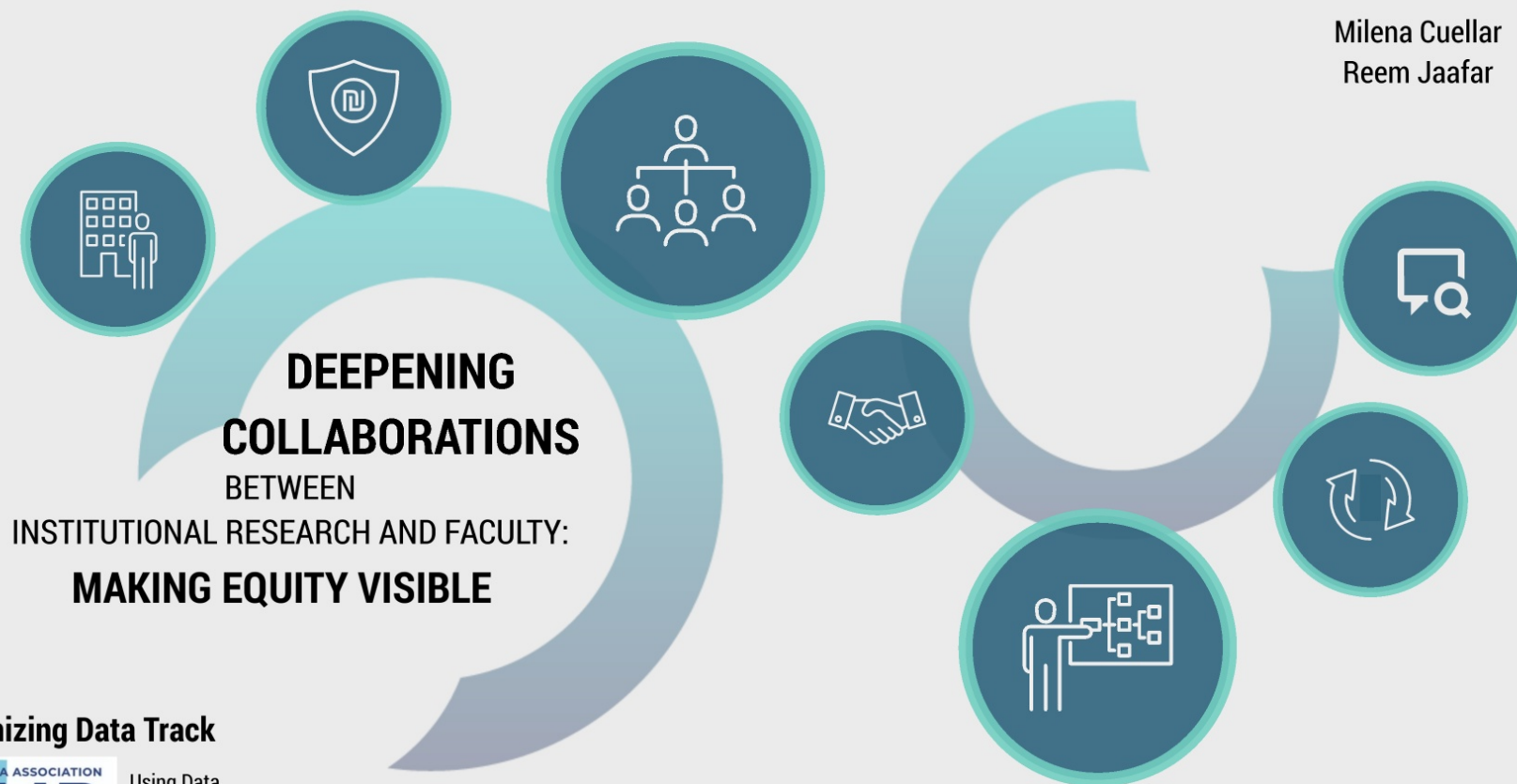
Supports

Exit



UNDERSTAND THE STUDENT JOURNEY





Humanizing Data Track



Using Data
for Advocacy.
October 26-29, 2021.

Dashboards @ LaGuardia

By Chunjuan (Jenny) Zhu (jzhu@lagcc.cuny.edu)
Institutional Research Manager

Provide the "freedom" of research for the different stake holders at the institution with a need of data.

Given the interactivity of the dashboards, provide opportunities for college members for independent research not related to traditional assessment and independent decision making

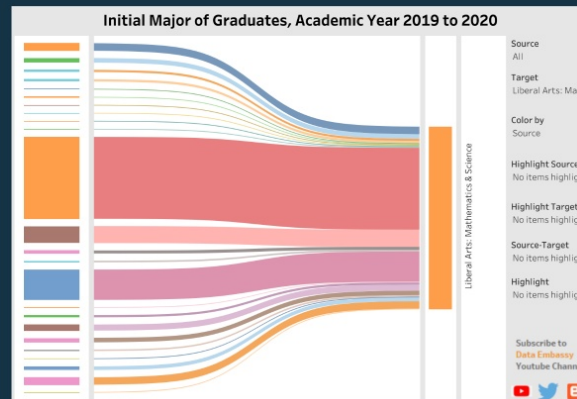
Challenges: Local data collection is limited by IPEDS and the "parent-child" relationship with the Central Office.

WHERE THE
STUDENTS'
COME FROM

ENROLLMENT
PROFILE

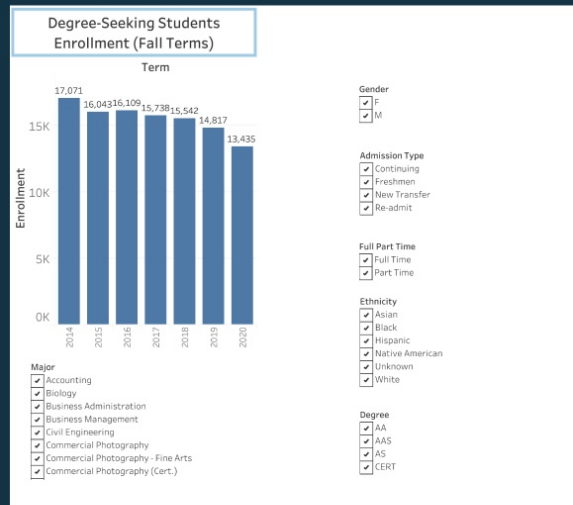
TARGET MAJOR - RECRUITMENT

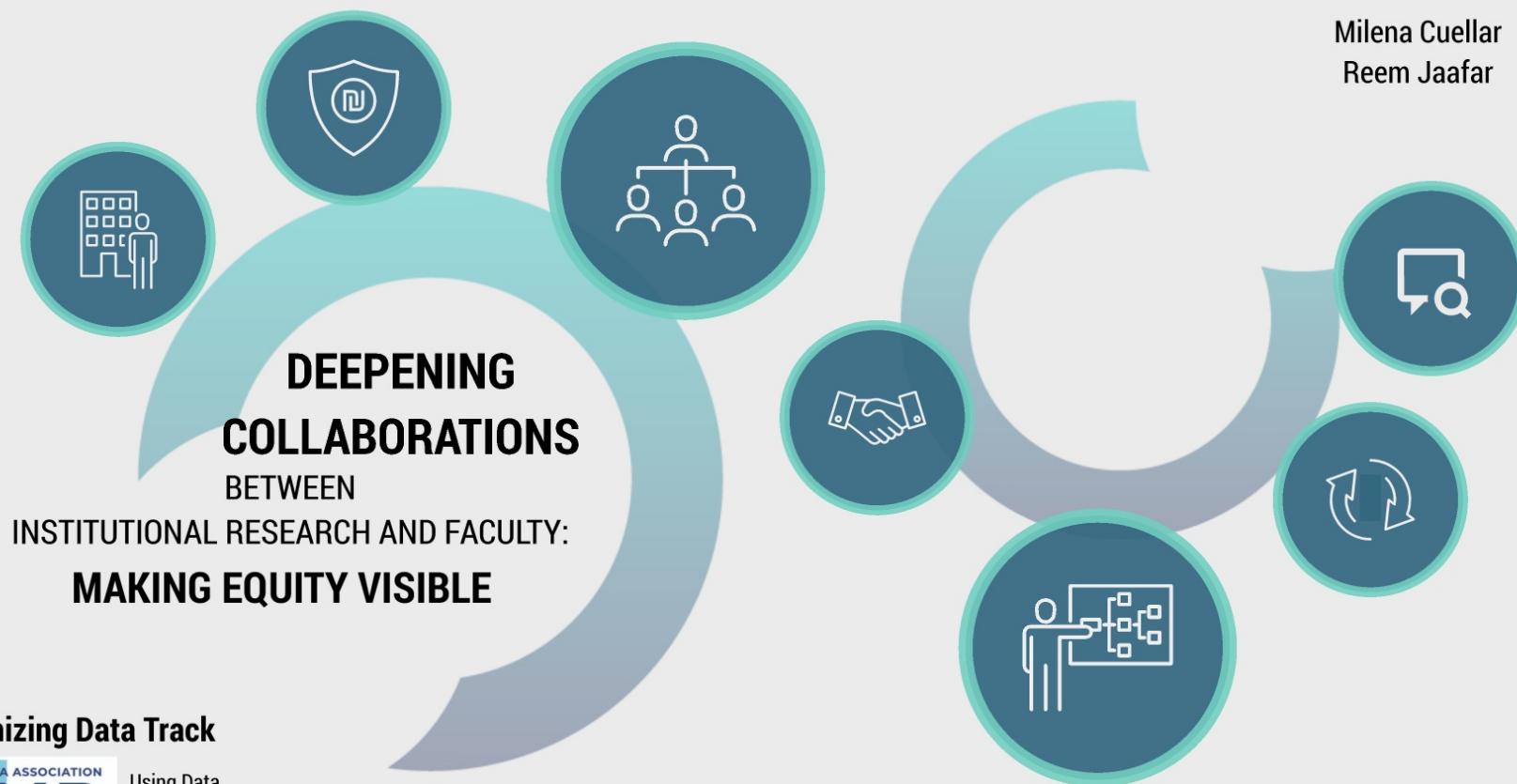
https://public.tableau.com/app/profile/jenny.zhu/viz/SankeyMinimalTemplatebyDataEmbassy_16147746355390/SankeyChartTemplate



ENROLLMENT PROFILE DASHBOARD

https://public.tableau.com/app/profile/jenny.zhu/viz/EnrollmentProfile_1/Degree-SeekingStudentsEnrollmentProfileDashboard





Humanizing Data Track



Using Data
for Advocacy.
October 26-29, 2021.

Brainstorming

<http://pollev.com/equitycair21>

Brainstorming

Think about your institutional context and your mission, describe in exactly one (short) sentence who are the students who succeed at your institution.

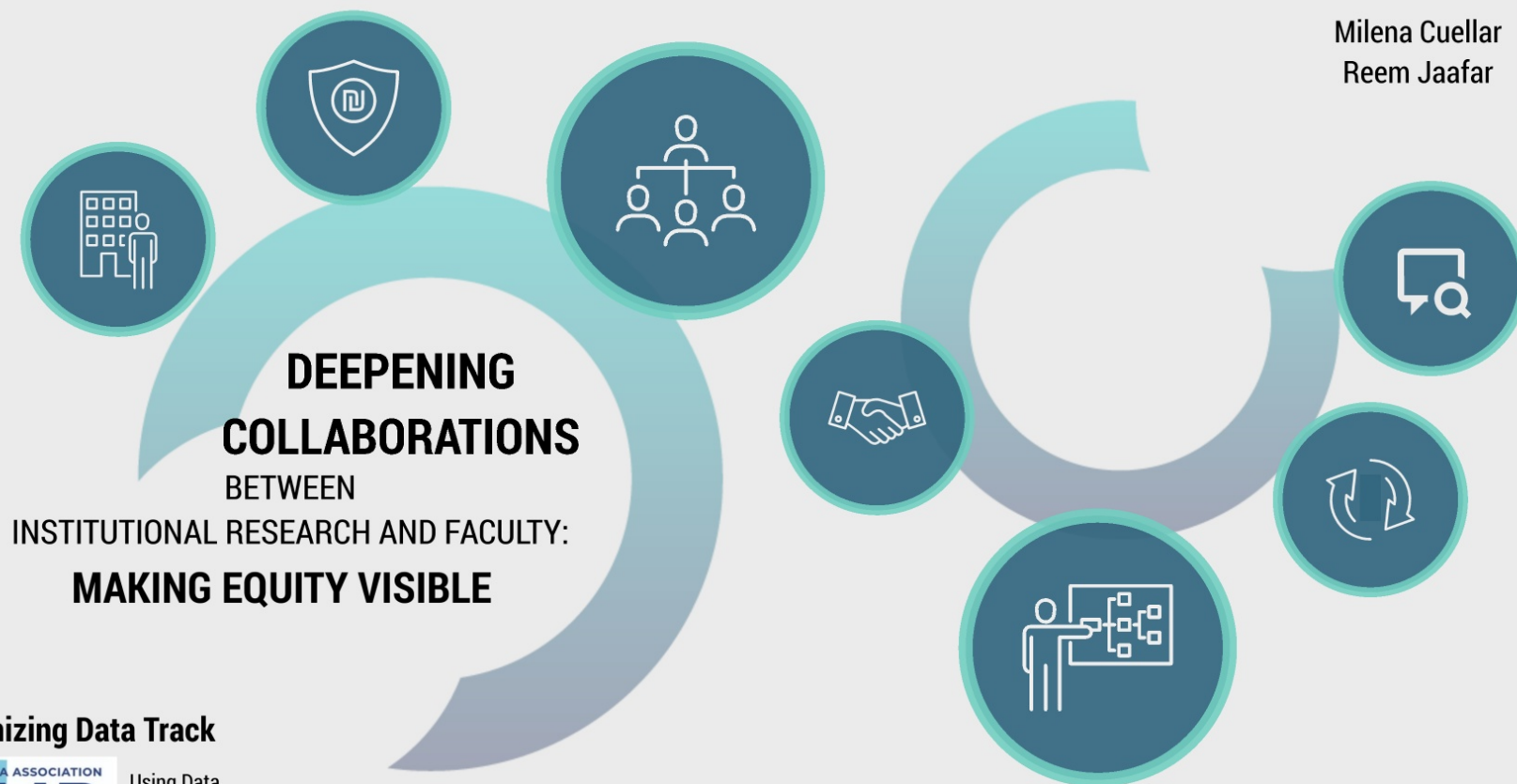
<http://pollev.com/equitycair21>

Brainstorming

Think about your institutional context and your mission, describe in exactly one (short) sentence who are the students who succeed at your institution.



<http://pollev.com/equitycair21>



Humanizing Data Track



Using Data
for Advocacy.
October 26-29, 2021.