

COURSE ANALYTICS

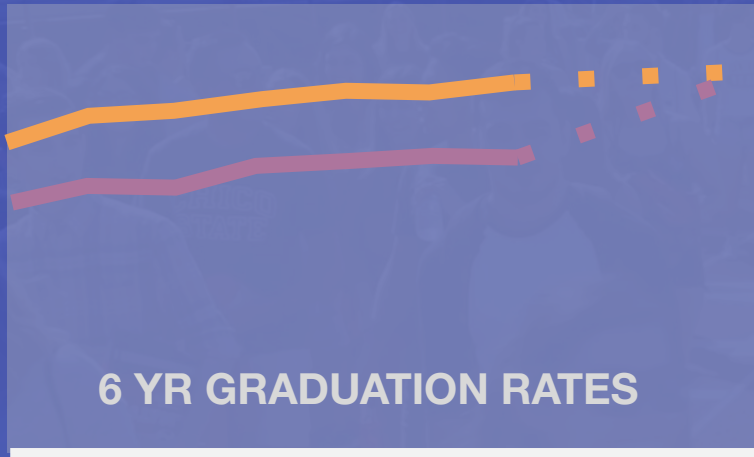
Engaging Faculty in the Advancement of Equity

Elka Lacno-Musngi

Student Success Initiatives, Research and Innovation
CSU, Office of the Chancellor

SDG 2025

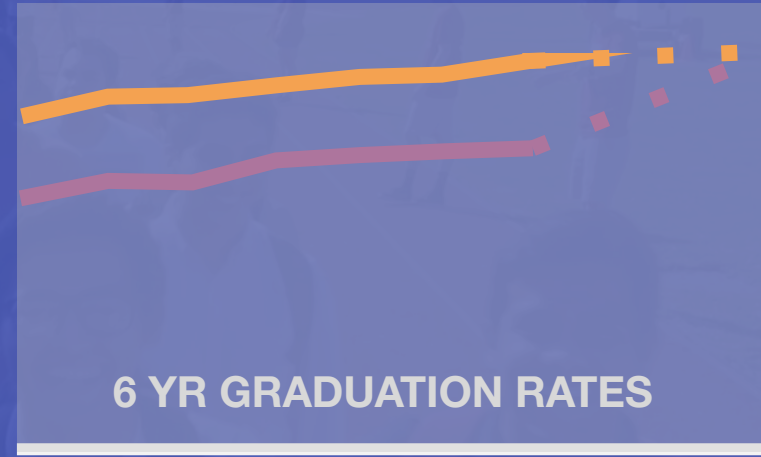
ELIMINATION OF EQUITY GAPS



2009-2015

2019-2025

Pell Recipients



2009-2015

2019-2025

Underrepresented Minority (URM)

GI 2025

A VIEW FROM 2021

The CSU is making good progress toward meeting the graduation goals

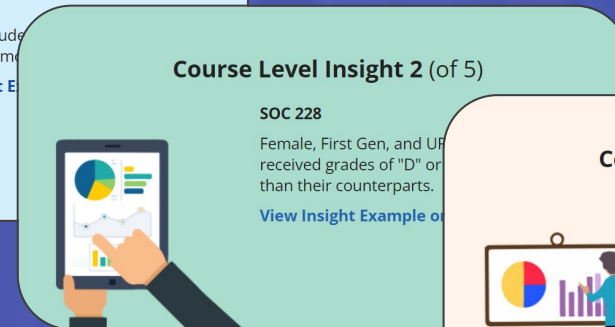
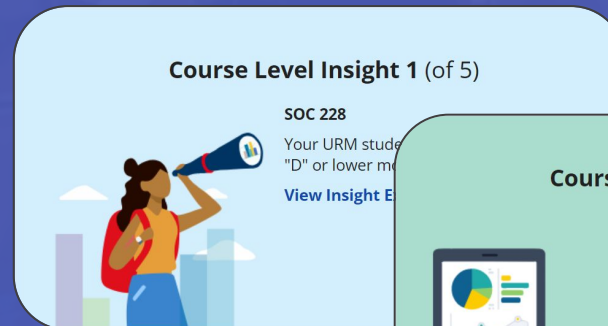
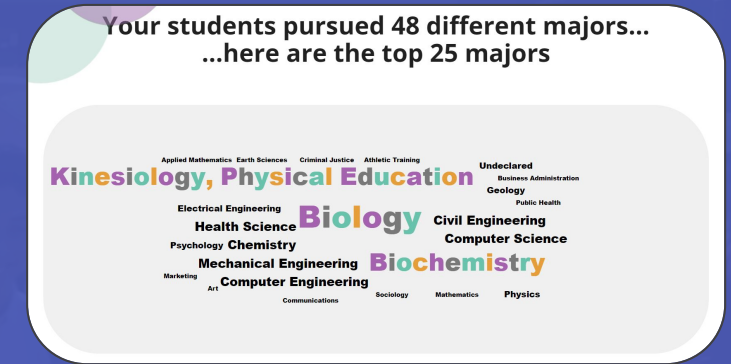
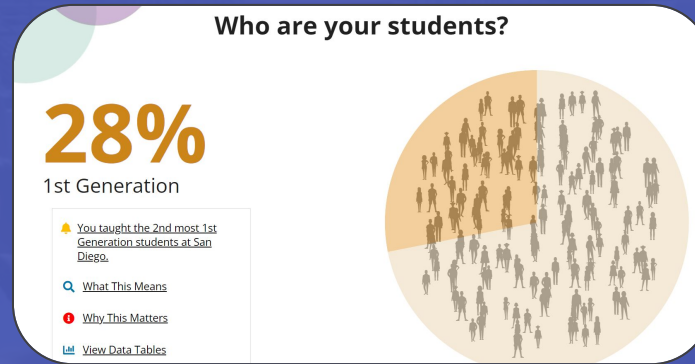
FACULTY

the UR and Pell equity gaps have widened

We need to increase our efforts in eliminating the equity gaps

COURSE EQUITY PORTAL

LOOKING BEYOND DASHBOARDS



COURSE EQUITY PORTAL

1 CUSTOMIZING THE INSIGHTS

2 COMMUNICATING THESE INSIGHTS

Course Level Insight 1 (of 4)

SOC 162

Over the past 8 years, students received grades of "D" or lower roughly 20% of the time.

[View Insight Example on Next Slide →](#)



Course Level Insight 2 (of 4)

SOC 162

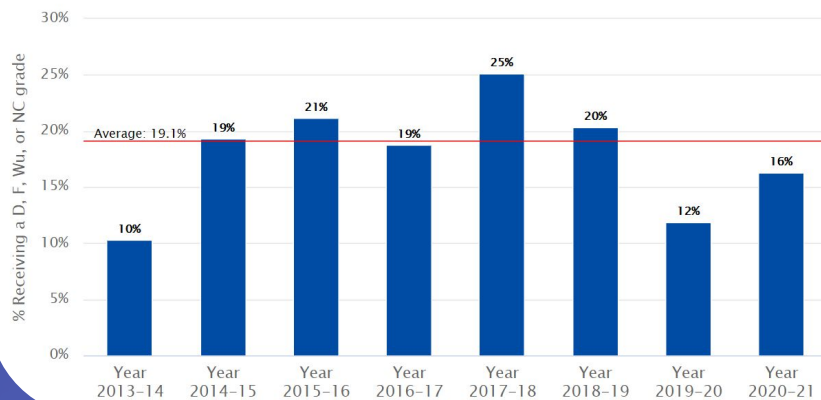
Students in your sections' received grades of "D" or lower more often than students in other SOC 162 sections.

[View Insight Example on Next Slide →](#)



For your SOC 162 sections from Fall 2013 to Fall 2020,

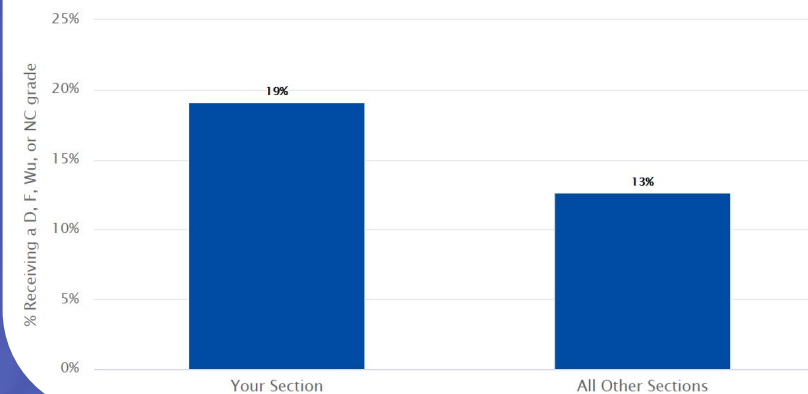
On average, 19.1% of your SOC 162 students received a D, F, Wu, or NC grade.



- [What This Means](#)
- [Why This Matters](#)
- [Self Reflection Questions](#)
- [View Data Tables](#)

For your SOC 162 sections from Fall 2013 to Fall 2020,

19% of your SOC 162 students received a D, F, Wu, or NC grade.
13% of all other SOC 162 students received a D, F, Wu, or NC grade.



- [What This Means](#)
- [Why This Matters](#)
- [Self Reflection Questions](#)
- [View Data Tables](#)

Course Level Insight 3 (of 4)

SOC 162

Female students in your sections received grades of "D" or lower more often than in other SOC 162 sections.

[View Insight Example on Next Slide →](#)



Course Level Insight 4 (of 4)

SOC 321

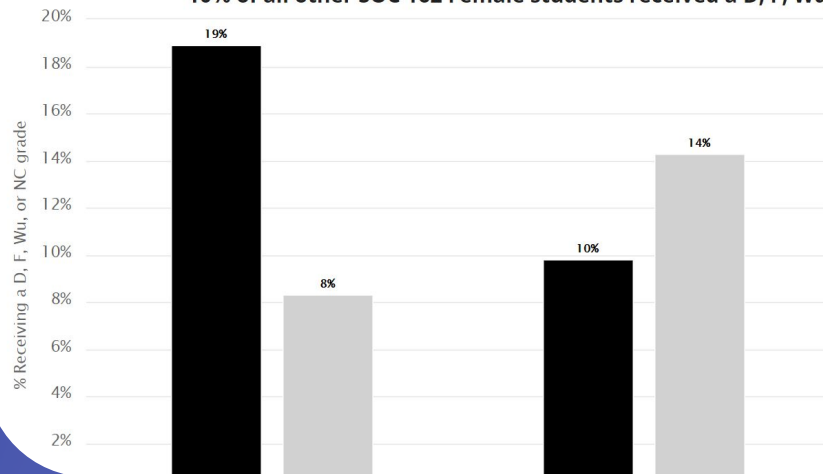
In this course, your First Gen students received grades of "D" or lower more often in recent terms.

[View Insight Example on Next Slide →](#)



For your SOC 162 sections in Fall 2020,

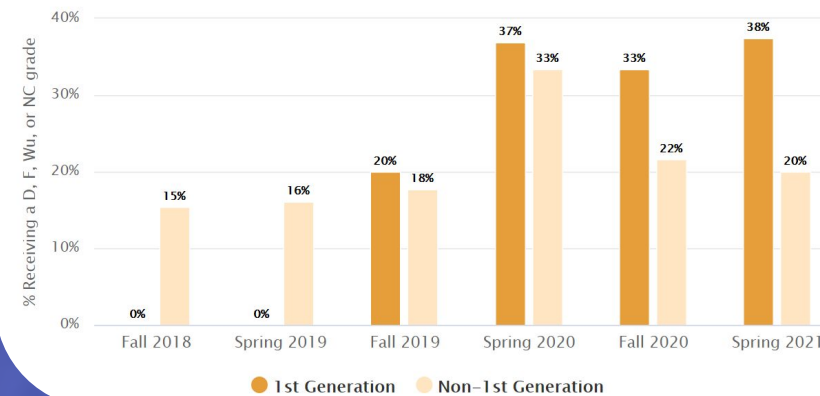
19% of your SOC 162 Female students received a D, F, Wu, or NC grade.
10% of all other SOC 162 Female students received a D, F, Wu, or NC grade.



- [What This Means](#)
- [Why This Matters](#)
- [Self Reflection Questions](#)
- [View Data Tables](#)

For your SOC 321 sections from Fall 2018 to Spring 2021,

Your First Gen students received D, F, Wu, or NC grades at increasing rates.



- [What This Means](#)
- [Why This Matters](#)
- [Self Reflection Questions](#)
- [View Data Tables](#)

CUSTOMIZATION

Statistical Analysis & Measures

EFFECT SIZE

Cohen's d | Hedge's g | Odd's ratio

TREND ANALYSIS

Ordinary Least Squares (OLS)
Regression | Chow test

Variable of Interest

COURSE DFW RATE

Students who received grades of
"D" or lower

All Students

Underrepresented Minority | Pell |
First Generation | Gender

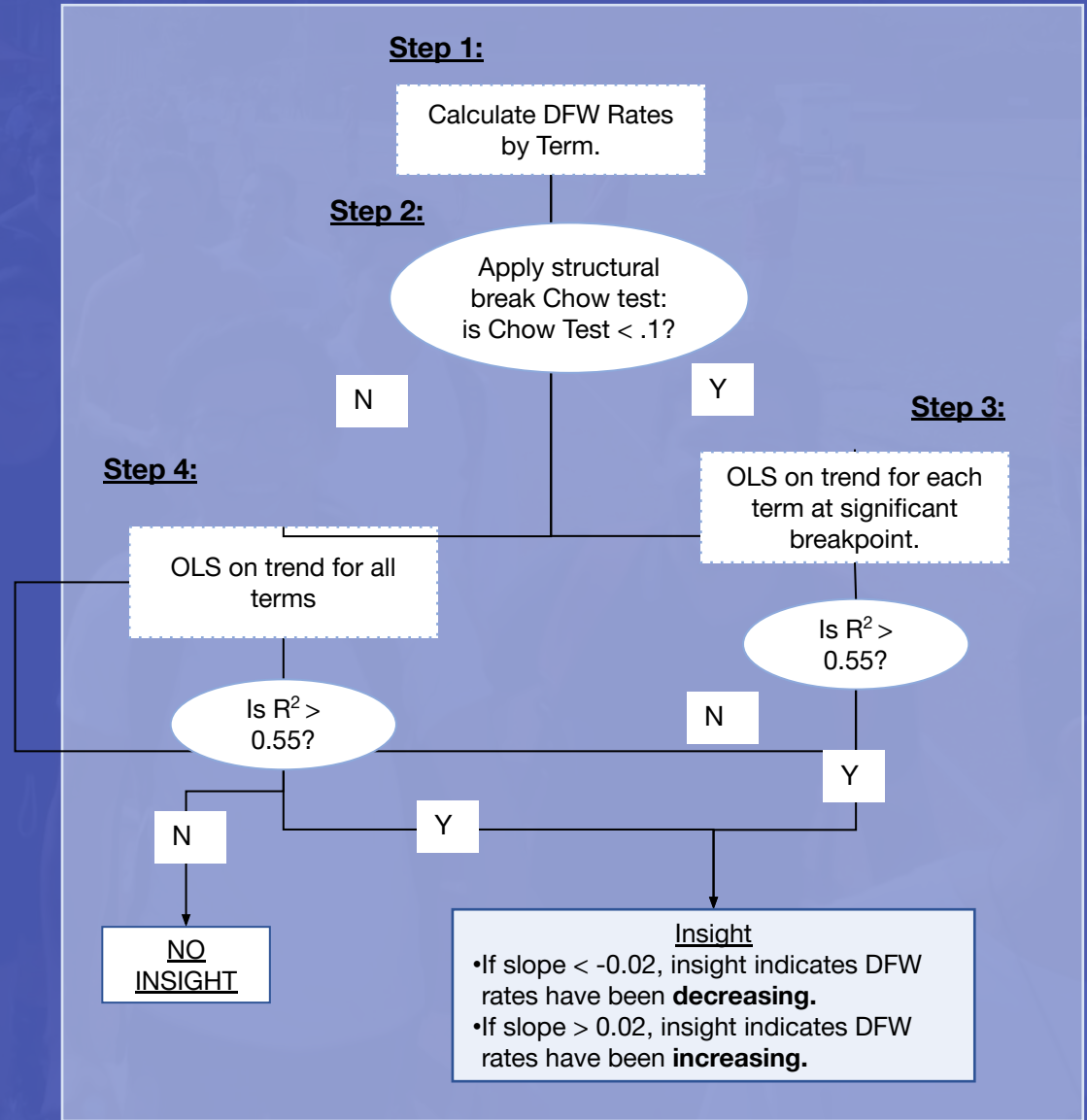
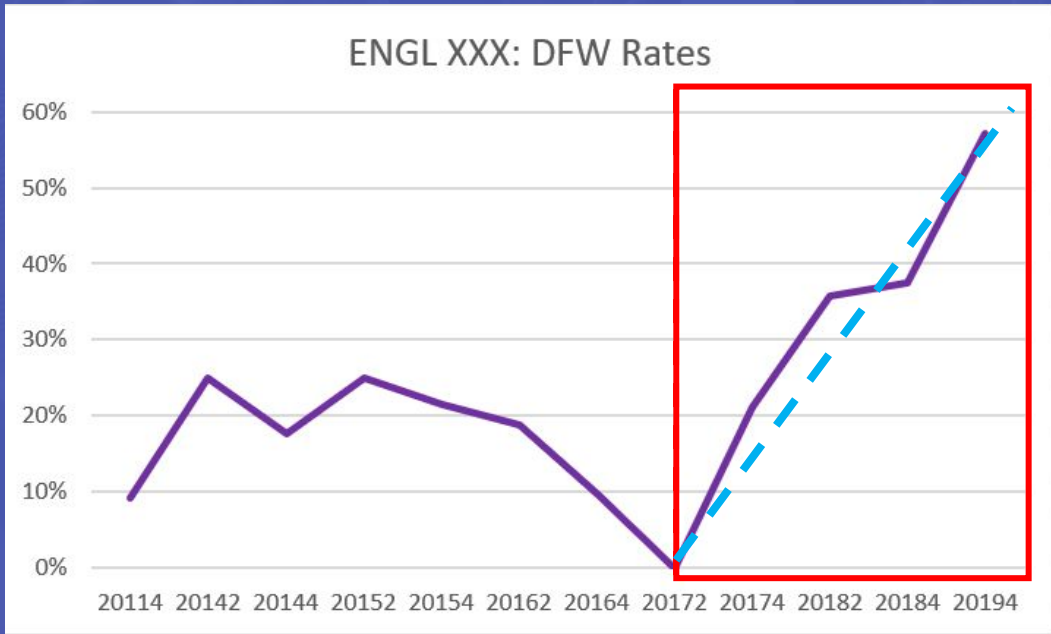
Insight Types

Increasing or Decreasing
DFW Rates

Comparison to other
sections of the same course
and same-level courses in
the department

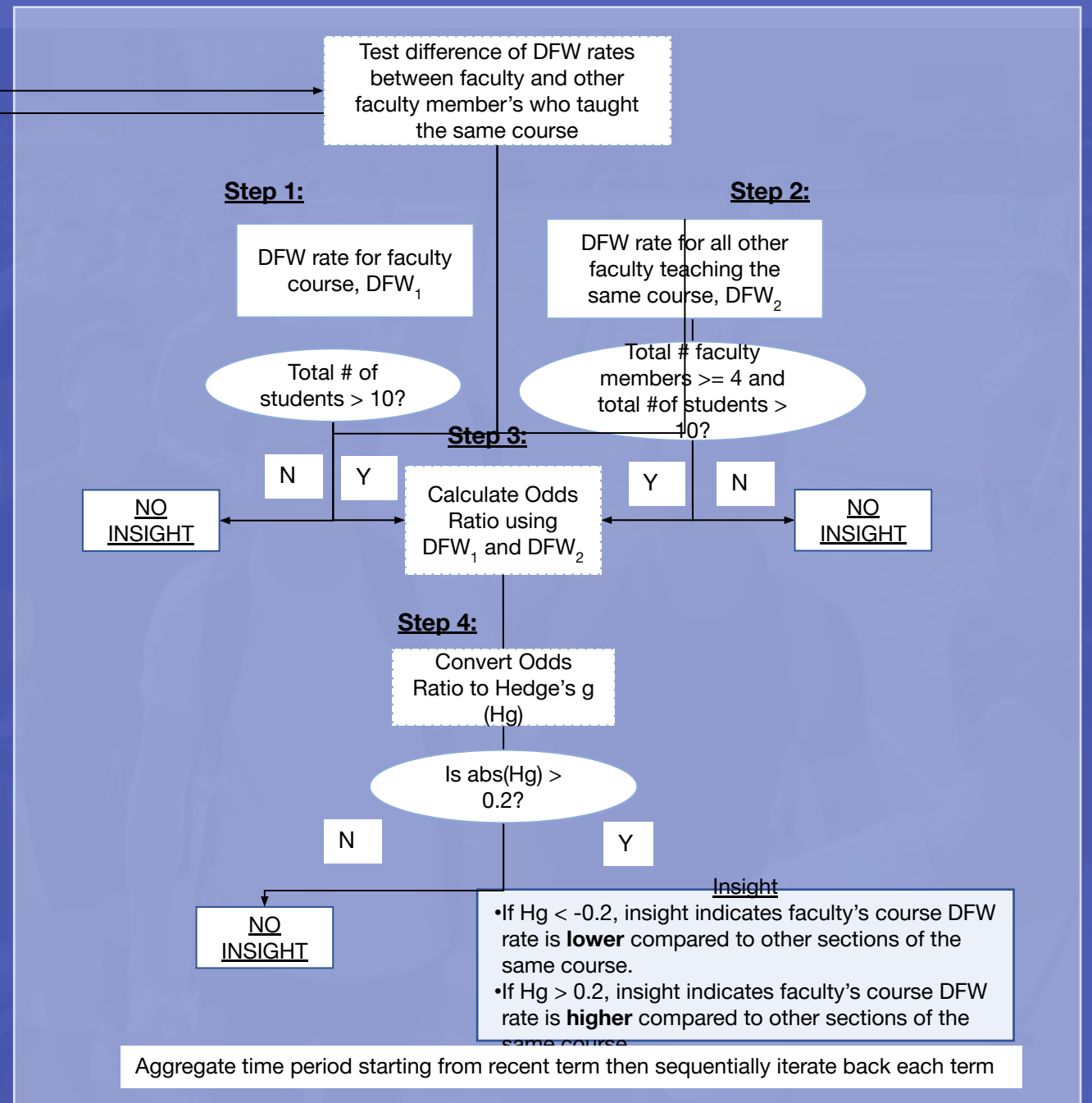
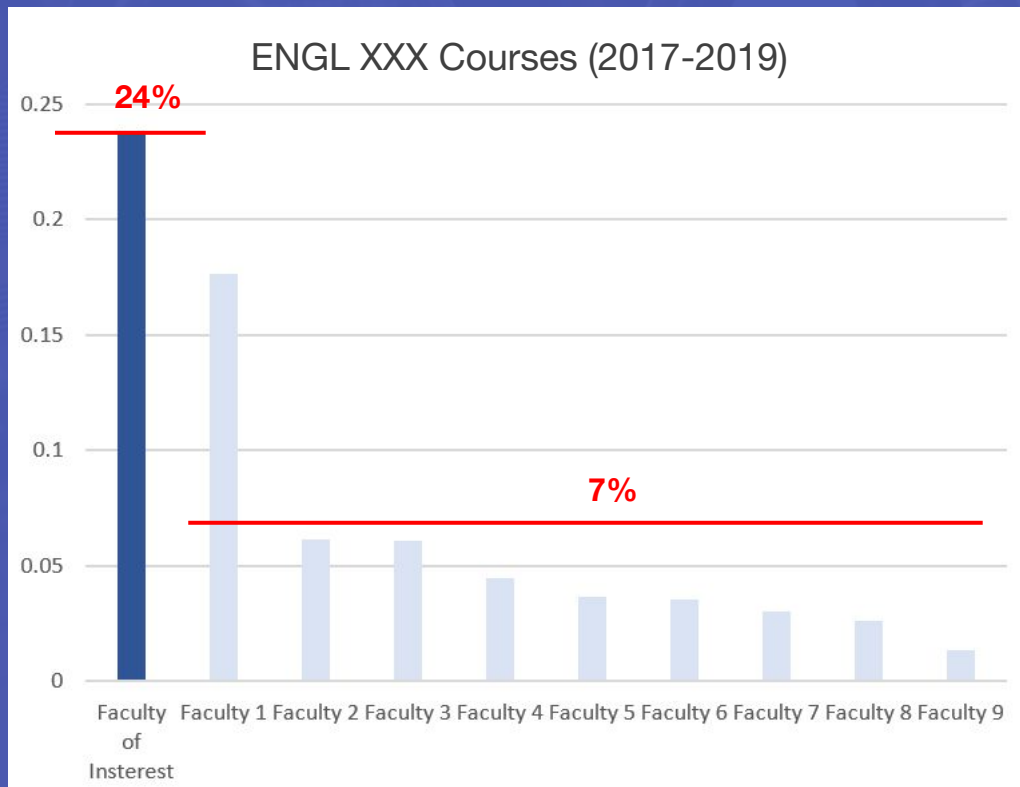
1 CUSTOM INSIGHTS

Assessing Trends



1 CUSTOM INSIGHTS

Comparing sections of similar courses



COMMUNICATION

Adding in Reflective Prompts

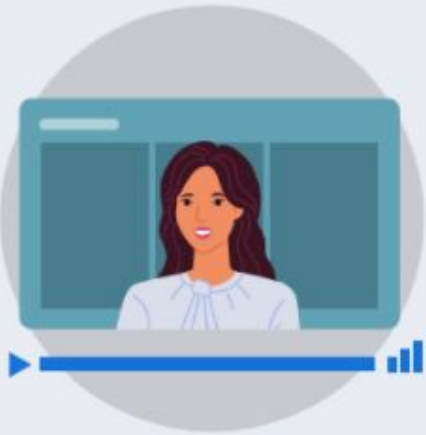
**WHAT DOES THIS
INSIGHT MEAN?**

**WHY DOES THIS
INSIGHT MATTER?**

**SELF REFLECTION
QUESTIONS**

COMMUNICATION

1. Explore Faculty Tips for Success



Explore Faculty Stories

2. Dig Deeper Into Your Equity Data



View Your Equity Data

3. Learn About Inclusive Pedagogies



Review Strategies

4. Engage in Professional Development



Visit Campus Website



**PUTTING IT
ALL
TOGETHER!**

ROLL OUT PLAN

- PILOT STUDIES FOR CSU CAMPUSES
- SLOW PROCESS OF INCORPORATING EACH CAMPUS
- FACULTY FOCUS GROUPS AND SURVEYS



WHERE TO REACH US?

EMAIL

elacno@calstate.edu | rstripling@calstate.edu

WEBSITES

www.equitymindedanalytics.com

<https://www.calstate.edu/csu-system/why-the-csu-matters/graduation-initiative-2025/Pages/Leading-with-Data.aspx>

Partner with Us: Actionable Data

The CSU is committed to utilizing evidenced-based decision making in support of our students' success. The tools below are meant to engage our partners, foster cultures of inquiry, and help all stakeholders in this enterprise identify and pursue those changes with the greatest potential to benefit our students.



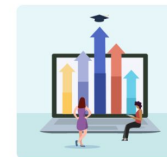
For Faculty, Staff and Administrators

the Student Success Dashboard

Solutions

Our family of solutions democratize data access, build cross-departmental communities of inquiry, and deliver customized insights to faculty.

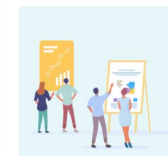
Student Success Dashboards



Move from insight to action with an intuitive suite of data analyses and visualizations for faculty, staff, and administrators across your campus.

[Learn More →](#)

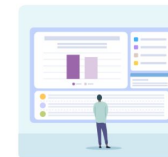
Student Success Analytics Course



Build professional capacity in equity-minded decision making while fostering cross-departmental cultures of inquiry.

[Learn More →](#)

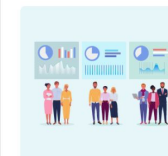
Course Equity Portal



Empower faculty to gain equity-minded insights about the courses they teach.

[Learn More →](#)

Community Partner Dashboards



Strengthen partnerships with high school, community college, and faith-based organizations through customized public dashboards.

[Learn More →](#)

Numbers

REMINDER: COMPLETE YOUR SESSION EVALUATIONS

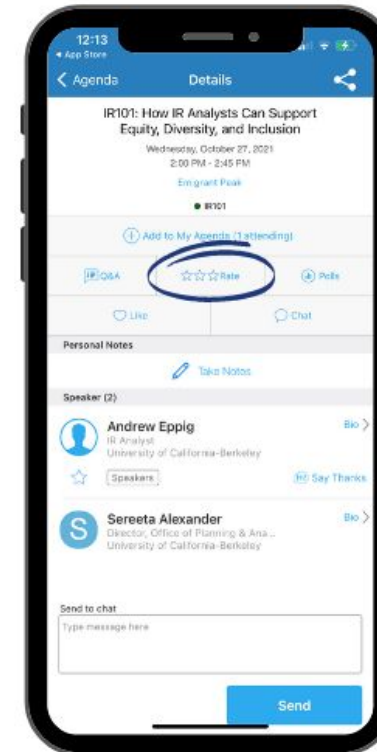
Any
Questions?



OPTION 01

Home - Feedback

- Navigate to the **Home** page
- Click on **Feedback**
- Select **Session Feedback**
- Select the name of the session that you attended



OPTION 02

Agenda - Session

- Navigate to **Agenda** on the bottom menu
- Select session name
- Click ☆☆☆ **Rate**